

OPERATIONS MANUAL

For

StreetSync

A Module of ATMS



522 Gillingham
Sugar Land, Texas 77478
Phone: (281) 240-7233
Fax: (281) 240-7238

© Copyright 2021 Cubic | Trafficware
All rights reserved.

Terms of Use Agreement

USE OF THIS SOFTWARE MANUAL IS SUBJECT TO THESE TERMS OF USE.

Agreement

Please read this *User Agreement* carefully before using the information provided in this *Manual*. This Agreement explains the terms and conditions governing the use of this *Manual* ("Terms of Use"), and it is your responsibility to read and understand them. By using this *Manual*, you expressly agree to be bound by these *Terms of Use* and to follow them as well as all applicable laws and regulations governing the *Manual*. If you do not agree to be bound by these *Terms of Use*, you may not access or use this *Manual*. Cubic | Trafficware reserves the right to change these *Terms of Use* at any time, effective immediately upon posting the *Manual* from our company website. By continuing to use the *Manual* after we post any such change, you accept the revised *Terms of Use*. If you violate these *Terms of Use*, Cubic | Trafficware may terminate your use of the *Manual*, bar you from future use of the *Manual*, and take appropriate legal action against you.

Permitted Use

You agree that you are only authorized to read, view and retain a copy of pages of this *Manual* for your own personal use, and that you will not duplicate, download, publish, modify or otherwise distribute the material on this *Manual* for any purpose other than to review product information for personal use or the use of a government or non-profit organization.

No Commercial Use

Users may not use this *Manual* for any commercial purposes such as to sell merchandise or services of any kind. You must obtain our prior written consent to make commercial offers of any kind, whether by advertisements, solicitations, links, or by any other form of communication. Cubic | Trafficware will investigate and take appropriate legal action against anyone who violates this provision.

Copyright

All content included on this *Manual*, including text, graphics, logos, icons, images, and software is the property of Cubic ITS Inc. or its content suppliers and is protected by United States and international copyright laws. This compilation (that is, the collection, arrangement and assembly) of all content on this *Manual* is the exclusive property of Cubic ITS Inc. and is protected by U.S. and international copyright laws. Cubic ITS Inc. reserves the right to revise the pages of the *Manual* or withdraw access to them at any time.

Trademarks

The logo and trademarks that appear throughout the *Manual* belong to Cubic ITS Inc., its affiliates or third-party trademark owners, and are protected by U.S. and international trademark laws. Without express prior written permission, you may not display or use in any manner, the logos or trademarks. Nothing in this *Manual* shall be construed as granting any license or other right to the intellectual property or other proprietary rights of Cubic ITS Inc., its affiliates or any third party, whether by estoppels, implication or otherwise. All contents of the *Manual* are: © Copyright 2021 Cubic ITS Inc. or its licensors. All Rights Reserved.

Disclaimer of Warranty

YOU UNDERSTAND AND EXPRESSLY AGREE THAT YOUR USE OF THE MANUAL AND THE INFORMATION FOUND THERE IS ENTIRELY AT YOUR RISK. CUBIC | TRAFFICWARE AND ITS AFFILIATES AND LICENSORS MAKE NO WARRANTIES OR ANY REPRESENTATIONS OF ANY KIND, EITHER EXPRESS OR IMPLIED, INCLUDING BUT NOT LIMITED TO WARRANTIES OF TITLE OR NON-INFRINGEMENT OR IMPLIED WARRANTIES OF MERCHANTABILITY, FITNESS FOR A PARTICULAR PURPOSE, NON-INFRINGEMENT OR OTHER VIOLATION OF RIGHTS IN RELATION TO THE AVAILABILITY, ACCURACY, VALIDITY, COMPLETENESS, RELIABILITY OR CONTENT OF THESE PAGES AND/OR THE MANUAL. CUBIC | TRAFFICWARE SHALL NOT BE LIABLE FOR ANY DIRECT, INDIRECT, INCIDENTAL, SPECIAL OR CONSEQUENTIAL DAMAGES, LOST PROFITS OR FOR BUSINESS INTERRUPTION ARISING OUT OF THE USE OF OR INABILITY TO USE THIS MANUAL, EVEN IF CUBIC | TRAFFICWARE HAS BEEN ADVISED OF THE POSSIBILITY OF SUCH DAMAGES. TO THE MAXIMUM EXTENT PERMITTED BY LAW, YOU HEREBY RELEASE AND FOREVER WAIVE ANY AND ALL CLAIMS YOU MAY HAVE AGAINST CUBIC | TRAFFICWARE, ITS AFFILIATES AND LICENSORS FROM LOSSES OR DAMAGES YOU SUSTAIN IN CONNECTION WITH YOUR USE OF THE MANUAL.

SOME JURISDICTIONS DO NOT ALLOW EXCLUSION OF CERTAIN WARRANTIES OR LIMITATIONS OF LIABILITY, SO THE ABOVE LIMITATIONS OR EXCLUSIONS MAY NOT APPLY TO YOU. THE LIABILITY OF CUBIC | TRAFFICWARE WOULD IN SUCH CASE BE LIMITED TO THE GREATEST EXTENT PERMITTED BY LAW.

Applicable Law

These *Terms of Use* and all legal issues related to the *Manual* shall be governed by the laws of the State of Texas, without regard to conflict of laws principles. You agree that any dispute involving these terms of use or this *Manual* will be heard in a court with jurisdiction in Fort Bend County, Texas. You further agree that the prevailing party in any legal action will be entitled to recover its reasonable attorney's fees incurred in connection with that action. If for any reason a court of competent jurisdiction finds any provision of these Terms of Use to be unenforceable, the remaining terms will continue in full force and effect.

Entire Agreement

These *Terms of Use* are the final and entire agreement between you and Cubic | Trafficware with respect to this subject and replace any and prior or contemporaneous understandings or agreements, written or oral, regarding the subject matter. Any waiver of any provision of these Terms of Use shall be effective only if in writing and signed by an authorized representative of Cubic | Trafficware

Table of Contents

Introduction	5
Purpose.....	5
Product Scope.....	5
Overall Description	5
Product Perspective	5
Product Functions	5
Operating Environment	5
Traffic Controller Support	5
StreetSync Versions.....	5
StreetSync Solo.....	5
StreetSync Enterprise	5
Database structure	6
Permanent File	6
Upload File.....	6
Installing StreetSync	7
Starting StreetSync	13
Quick Action Tool Bar.....	13
Selection Drop-Down Menu.....	15
New City/Jurisdiction.....	15
Viewing all City/Jurisdictions	16
Switch to another City/Jurisdiction.....	17
Configuration	19
ATMS	19
RS-232	19
Ethernet (Available for Controllers using Scout [V85.x] software ONLY)	20
Sync	21
Considerations: Synchronizing Software	23
Initial Screen	24
Controller Section.....	25
Add.....	25
Delete	26
Delete All.....	26
Sort By ID, Sort By Name	27
Database Section	28
View	28
Edit.....	29
Print.....	31
Export.....	32
Save	33
Compare	33
Diagnostics	36
Action Section.....	38
Upload / Download	38
Download Real-Time	39
Realtime Section	40
Scan	40

Software Update Section 41

 Modem String Initialization 41

 Flash Firmware..... 42

Help Section 43

Hardware considerations 44

 PC to 2070 Cable Setup..... 44

 NEMA TS2 Communications Port Cable setup 44

Introduction

Purpose

The purpose of the ATMS StreetSync application (StreetSync) is to provide access to traffic controller units that are otherwise disconnected from the central system via a laptop.

Product Scope

The product is an application to access the ATMS database and the traffic controllers in the field with minimal effort. The product will use standard protocols where possible to maximize accessibility to the existing ATMS software environment.

Overall Description

Product Perspective

The application will install on a variety of laptop devices running Windows 7 or higher using serial connectivity.

Product Functions

The major functions in the app include:

- One-click application installation
- “Connection-less” Accessibility to ATMS
- List all available controllers
- View/Edit each available controller’s database
- Single action menu to provide access to all functions
- Upload database from a controller
- Download database to a controller
- Compare changed database parameters within a controller
- Retrieve most recent controller databases from the central system
- Transfer recent controller uploads to the central system
- Download current time-of-day to a controller
- Download firmware to Cubic | Trafficware NEMA Controllers Using Version 61.x software and MM516 MMU’s
- Create, save and access multiple cities and/or jurisdictions

Operating Environment

The operating environment will be Windows 7 or higher, running on a variety of PC devices.

Traffic Controller Support

The app will support both TS2, 2070, ATC and Commander traffic controllers containing Cubic | Trafficware software/firmware.

StreetSync Versions

There are two versions of StreetSync available as described below. Please contact your Cubic | Trafficware representative for more information.

StreetSync Solo

This version is used for standalone applications and does not interface directly with ATMS. It is intended for agencies that want to keep database information on isolated controllers.

StreetSync Enterprise

This version is used with agencies that have ATMS and want a laptop interface for isolated controllers that are not communicating on their system.

Database structure

The key to understanding the ATMS StreetSync file system is how the system protects the Permanent File (last successful download through the communication system). The system performs a verification by uploading the controller to the Upload File and comparing the upload with the Permanent File. The verify procedure is used to prevent edit changes at central from being copied over valid changes made in the field through the keyboard.

Permanent File

ATMS saves a copy of the last successful download to the Permanent File to maintain an accurate copy of each controller database in the field. A separate Permanent File for each controller is stored in the /nazserv/data directory on the server with a .prm file extension.

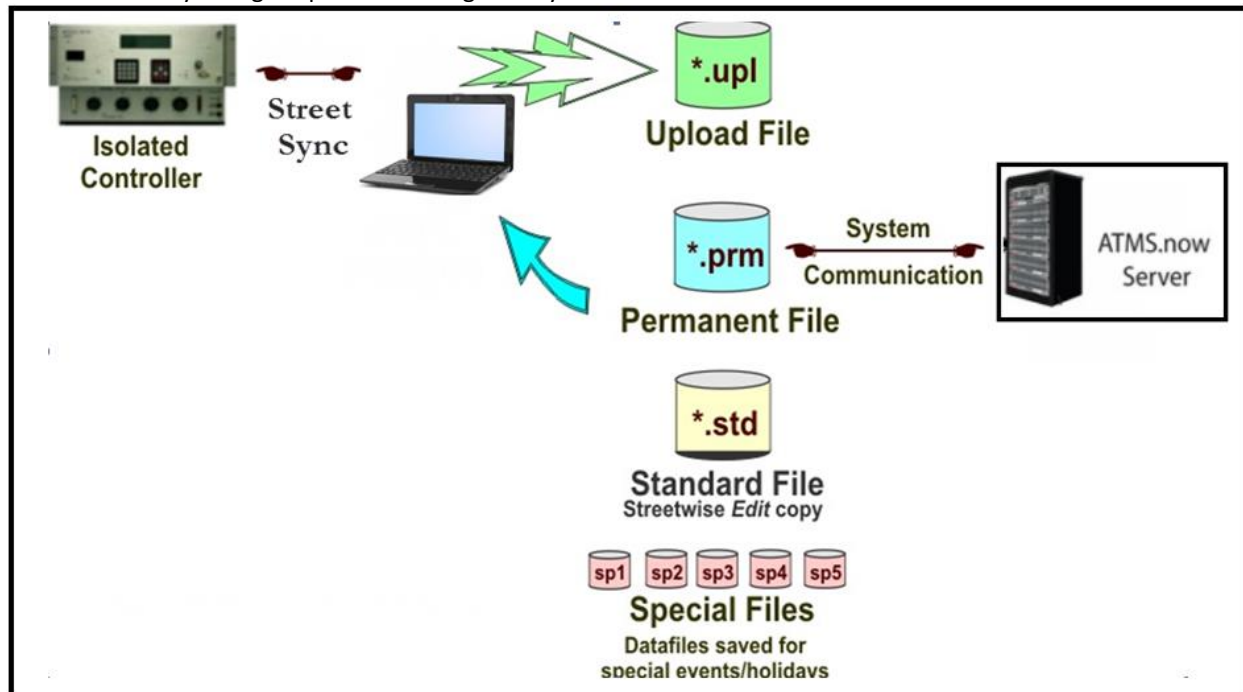
The Permanent File is transferred to StreetSync during the synchronization procedure. This insures that StreetSync carries the last successful download to the field.

The PC which contains StreetSync stores the .prm files in the directory /nazserv/data. All Data which is edited using StreetSync is saved on the /nazserv/data directory on the StreetSync PC. When editing is completed, the updated .prm file is then time stamped.

Upload File

StreetSync saves a copy of the controller database uploaded by the system to the Upload File on the ATMS server after synchronization with the ATMS server. All Data which is edited using StreetSync is also stored in the Upload file on the ATMS server. When editing is completed, the file is then time stamped. A separate Upload File for each controller is stored in the /nazserv/data directory on the ATMS server with an .upl file extension.

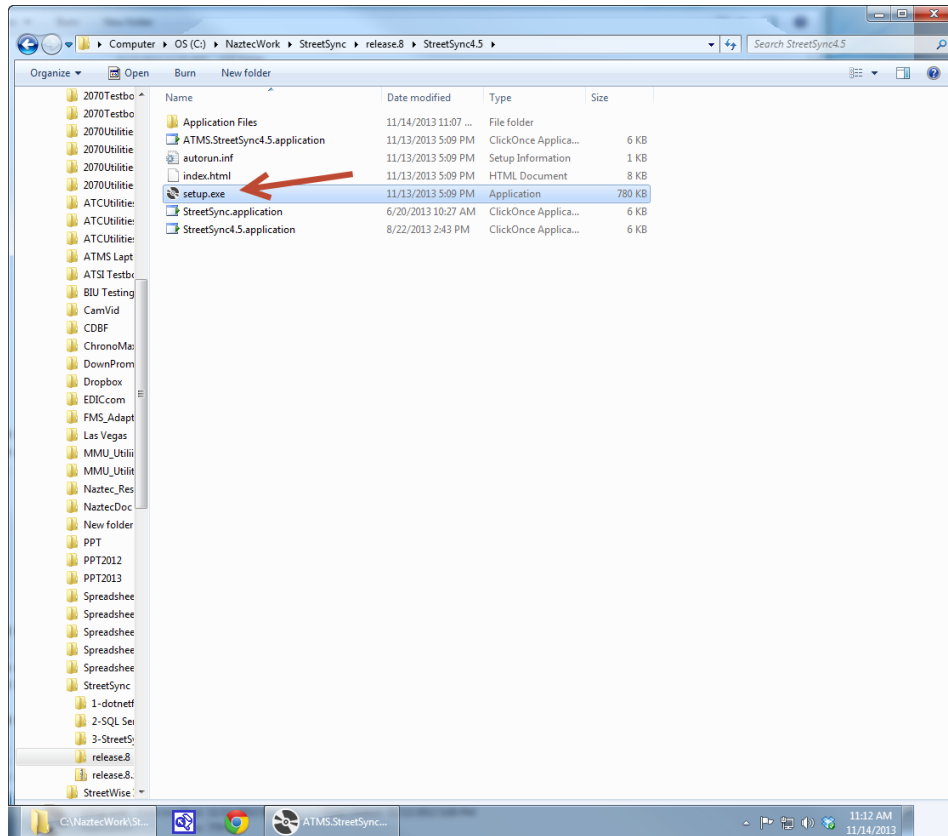
Keep in mind that the Permanent and Standard Files are protected from all field uploads in ATMS and from the StreetSync synchronization procedure. Therefore, in ATMS the user is required to manually copy the Upload File to either the Standard or Permanent to commit any changes uploaded through the system.



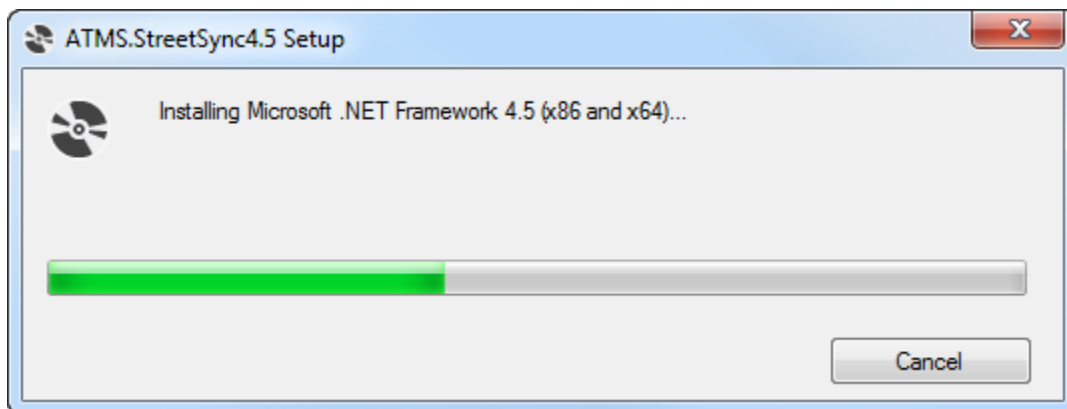
Installing StreetSync

NOTE: To properly install StreetSync using the Microsoft toolset, you must connect your device to the Internet. After installation, Internet access is not necessary. If Internet access cannot be achieved, contact Cubic | Trafficware technical support for further installation instructions.

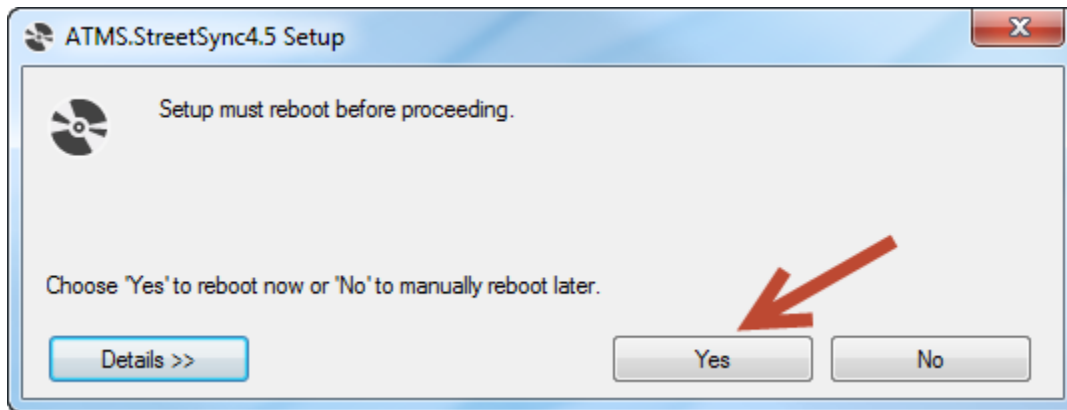
1. The CD provided by Cubic | Trafficware should automatically start the install of StreetSync. If not browse the CD and run the file labeled **setup.exe** to begin the installation.



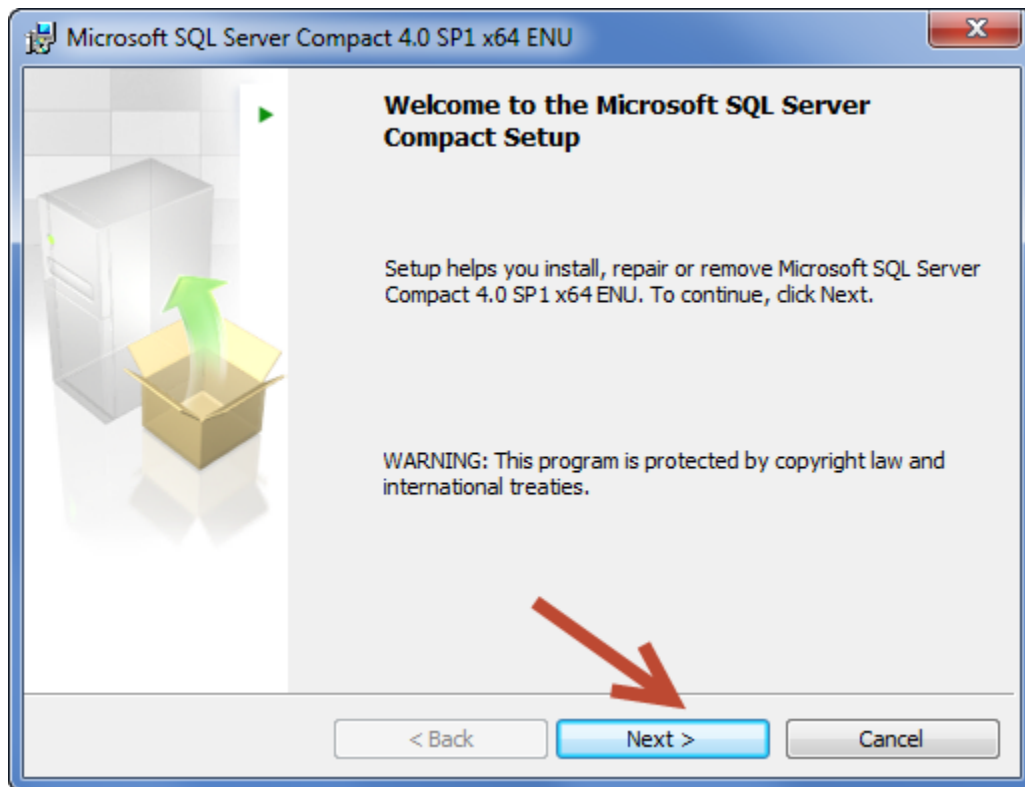
2. The setup will begin and you should see the screen below while StreetSync is installing.



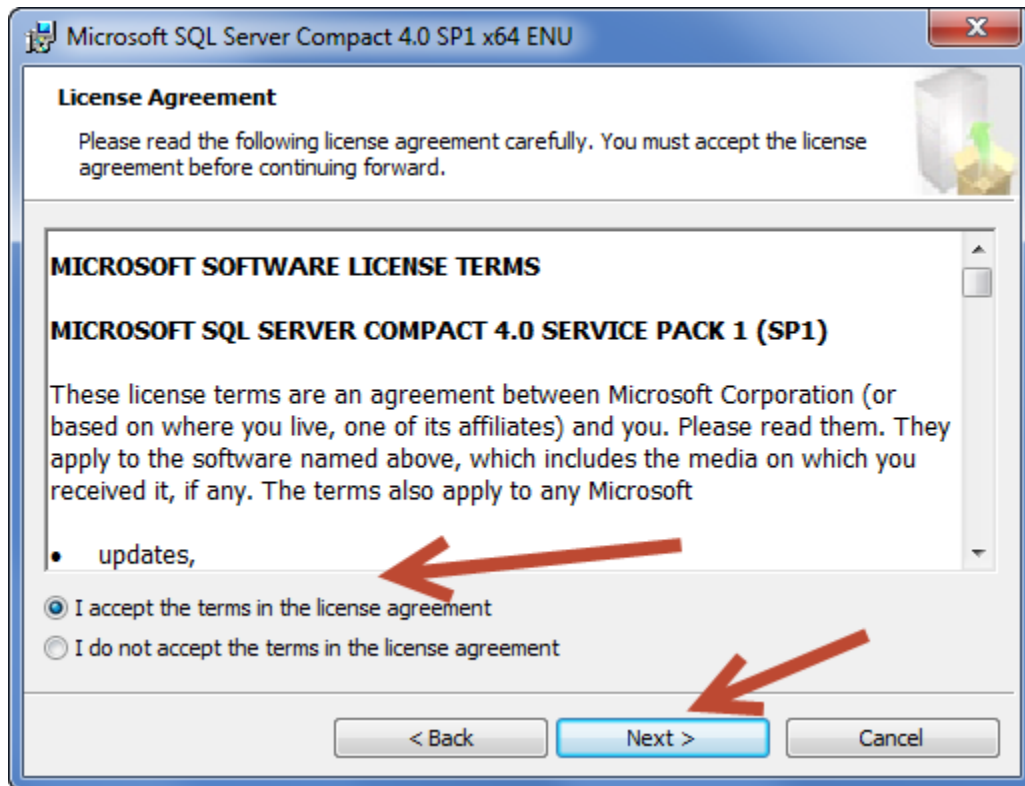
- When the initial installation is completed the following screen will request a hardware reboot. Please answer **Yes** to reboot your PC, laptop, or tablet.



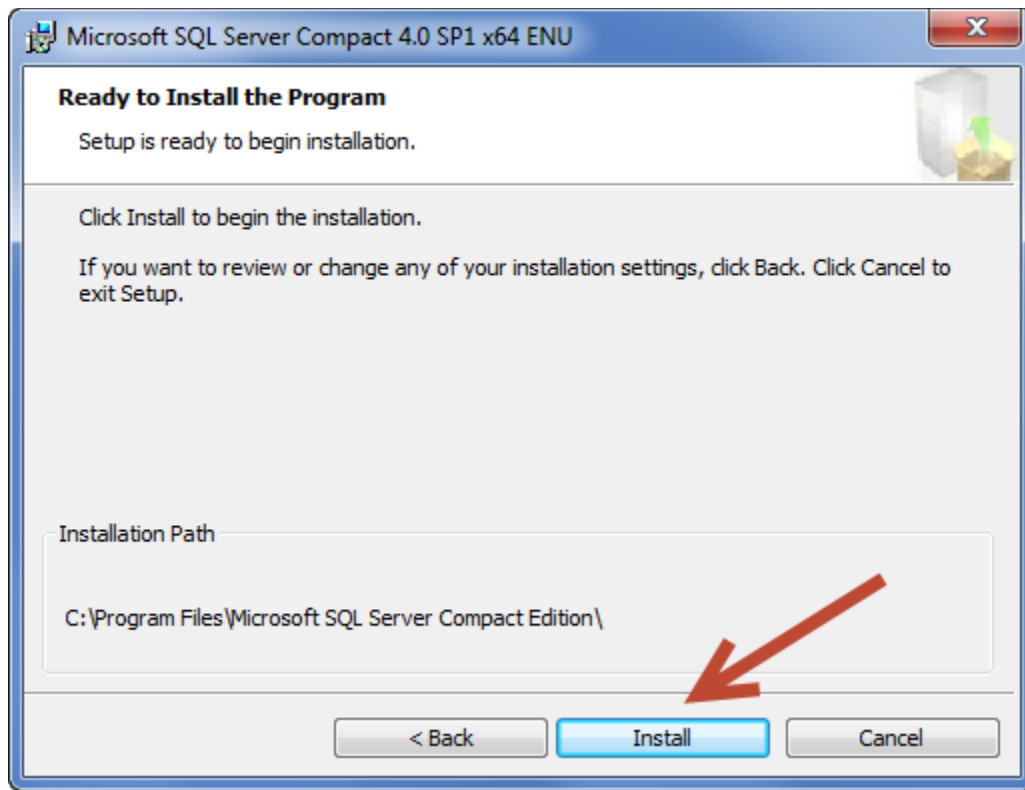
- Upon restart the following screen may be displayed depending on what has been previously installed on your particular PC/Laptop/Tablet computer. If this screen is displayed then the setup will now install Microsoft SQL Compact Database software otherwise it has previously been installed. If this screen is not displayed then the setup software will skip to step 10 below.



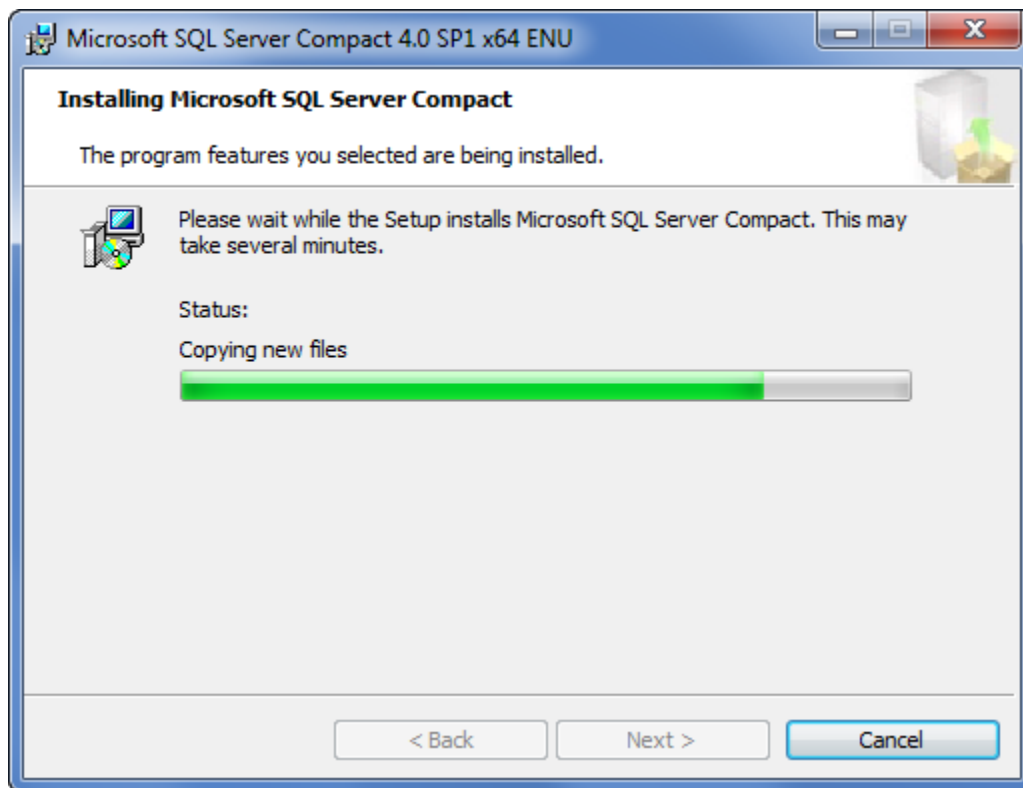
5. Select Next to continue.



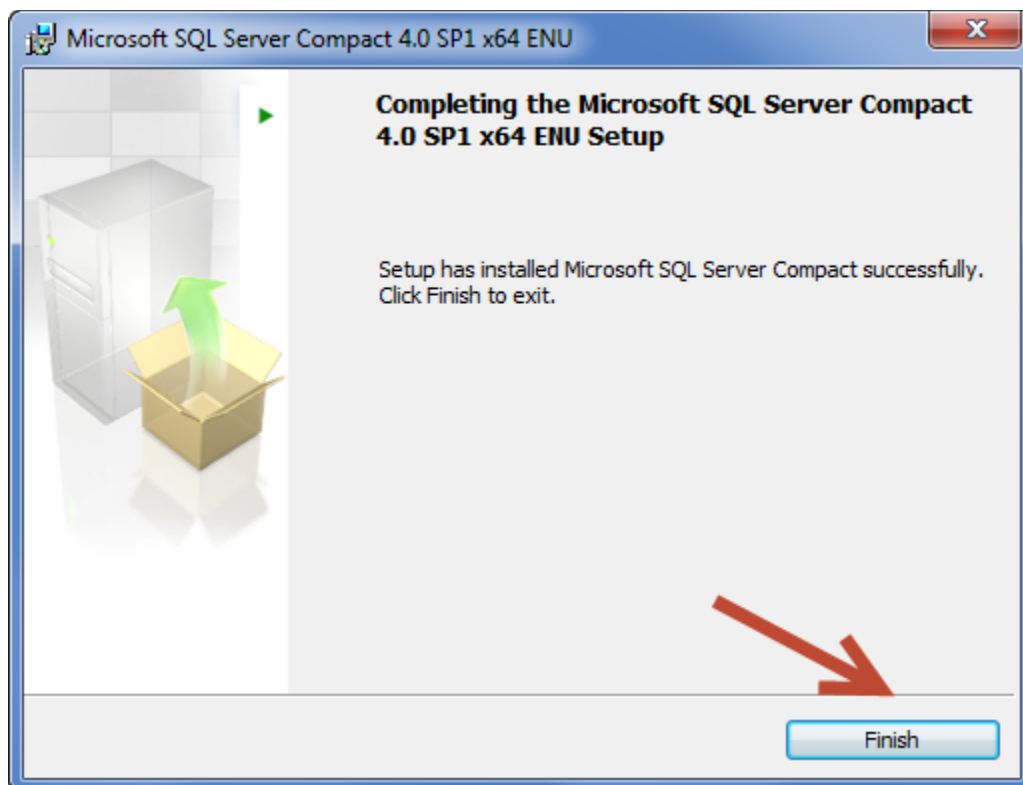
6. Accept the License Agreement and select Next to continue.



7. Select Install to install the SQL Compact Database software.

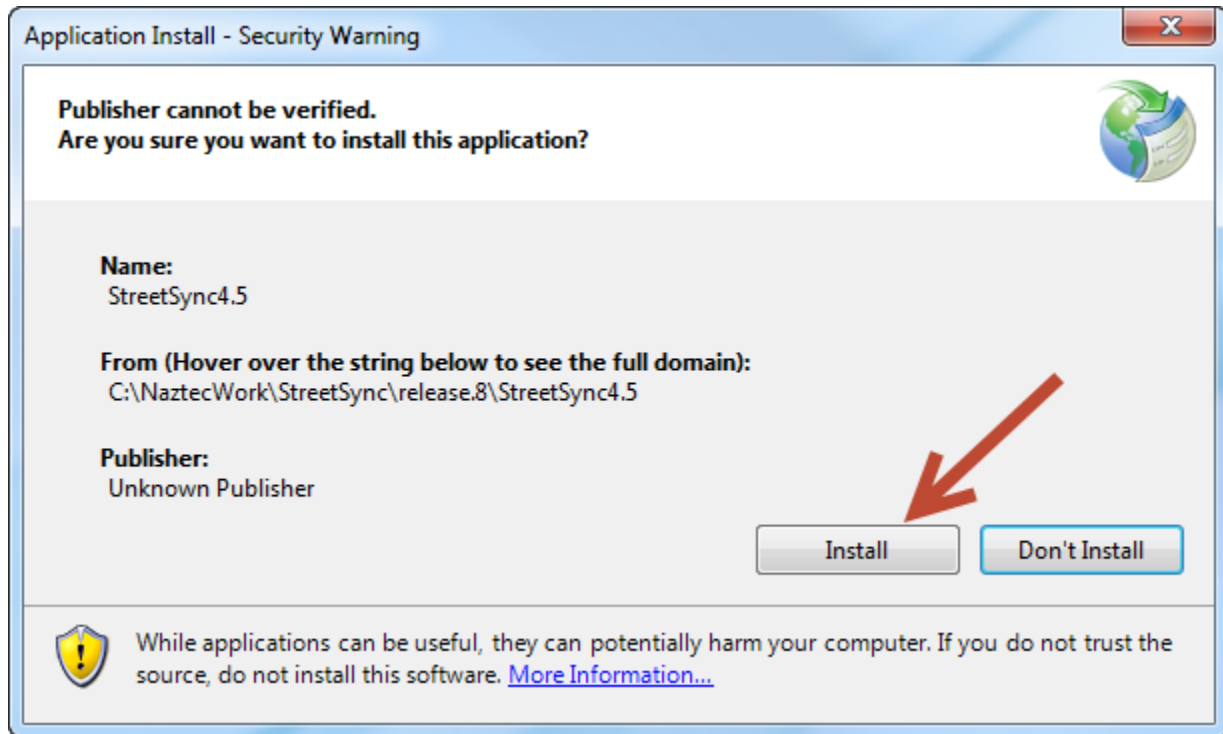


8. When completed, the following screen will be displayed.

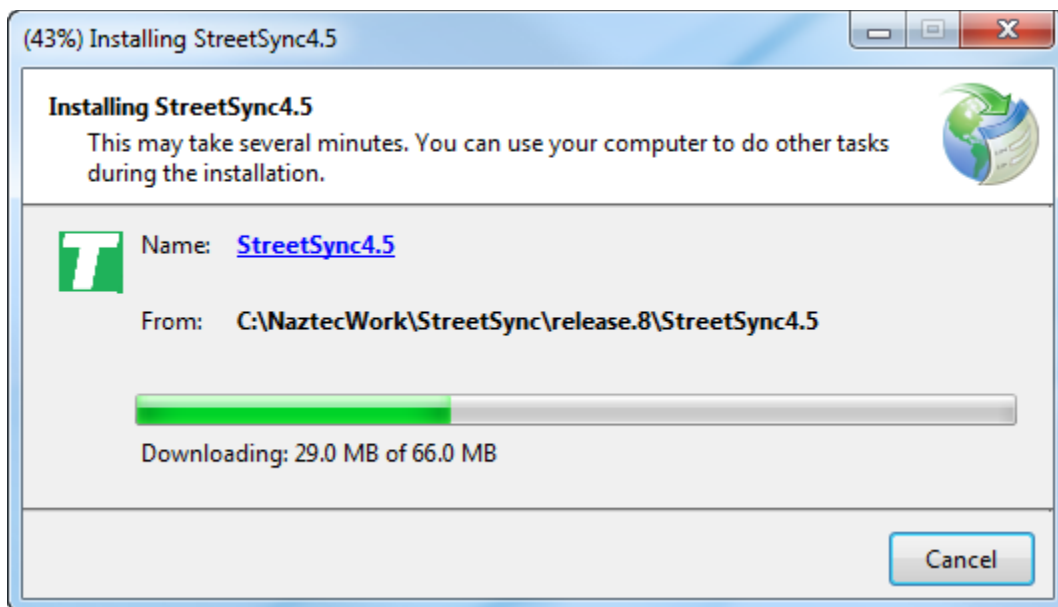


9. Select Finish to complete the Microsoft SQL Compact Database software.

10. The following screen will automatically be displayed. If not, run Setup again to finish the StreetSync Installation.



11. While Installation is occurring, the following screen will be displayed.

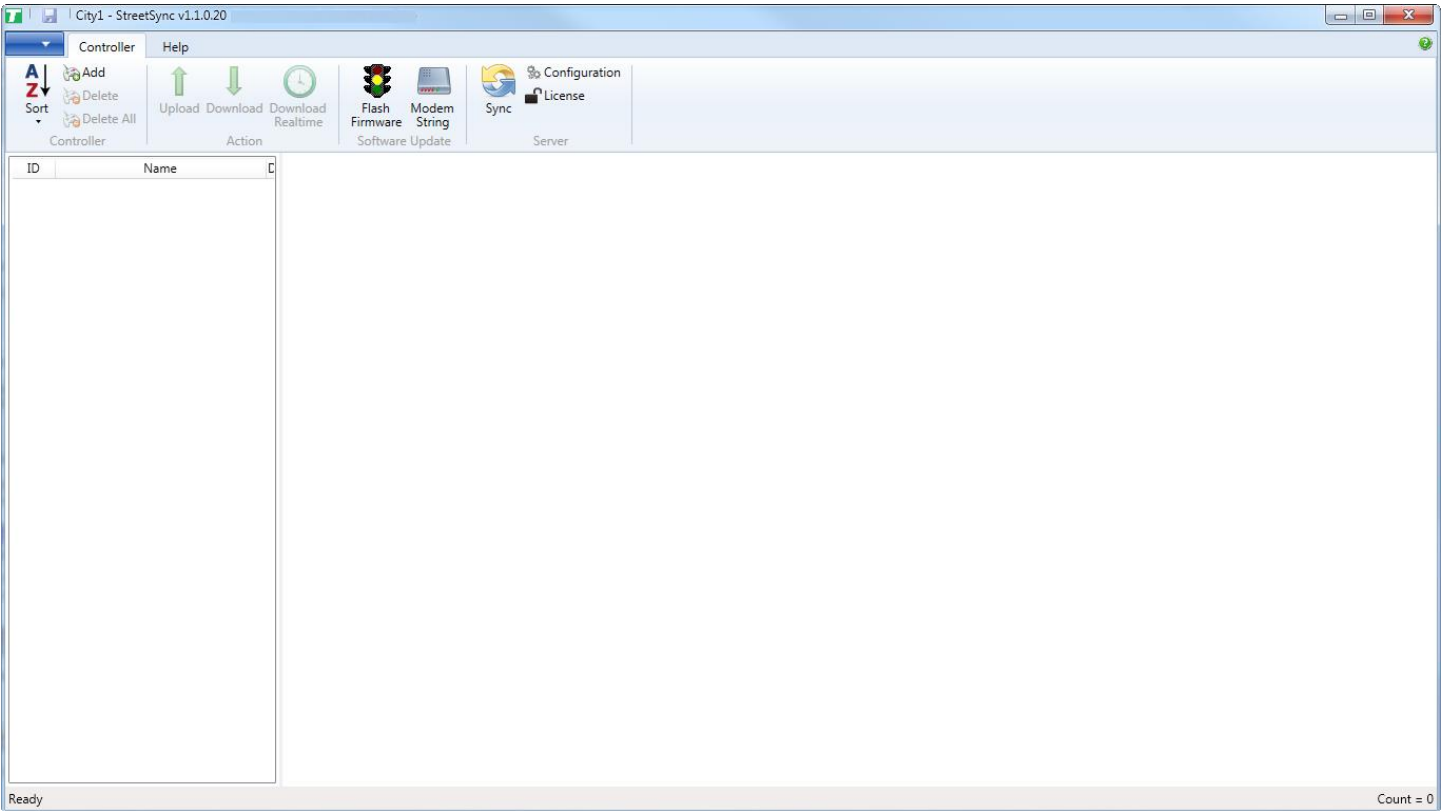


12. When installation is completed StreetSync will automatically start and the splash screen below will be displayed.



Starting StreetSync

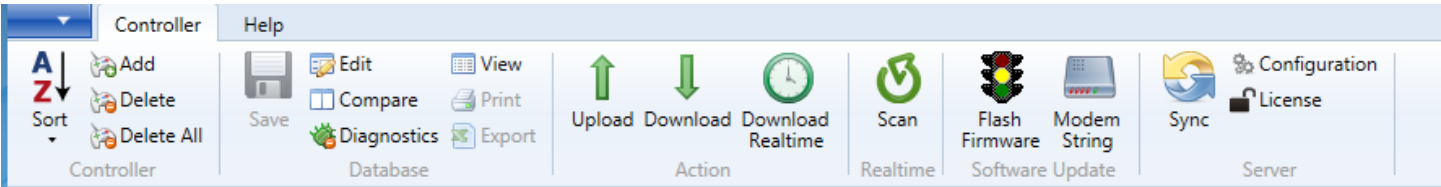
When you first start StreetSync the following screen will appear.



You must now license the firmware via the tool bar.

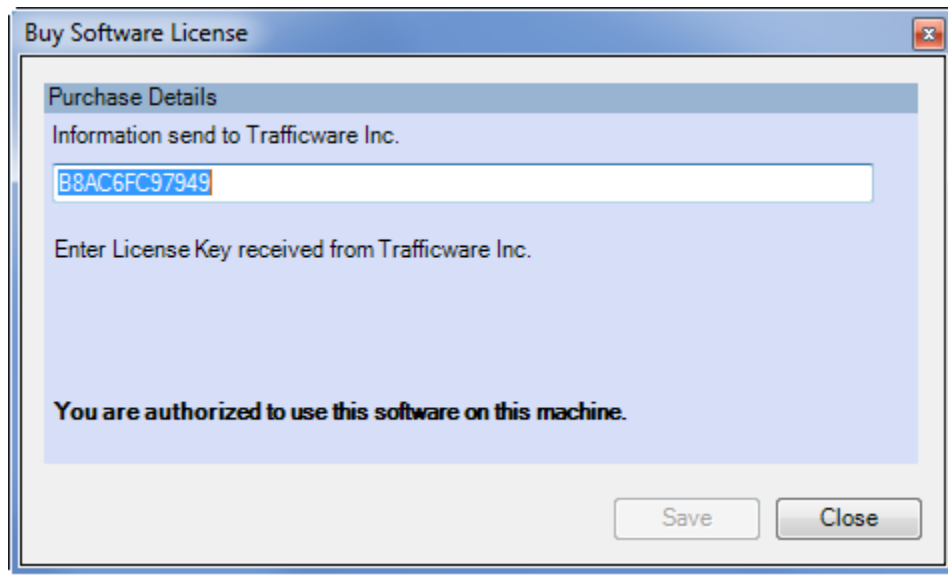
Quick Action Tool Bar

There is a quick access toolbar on the top of the screen that allows you to access the controller databases, as shown below.

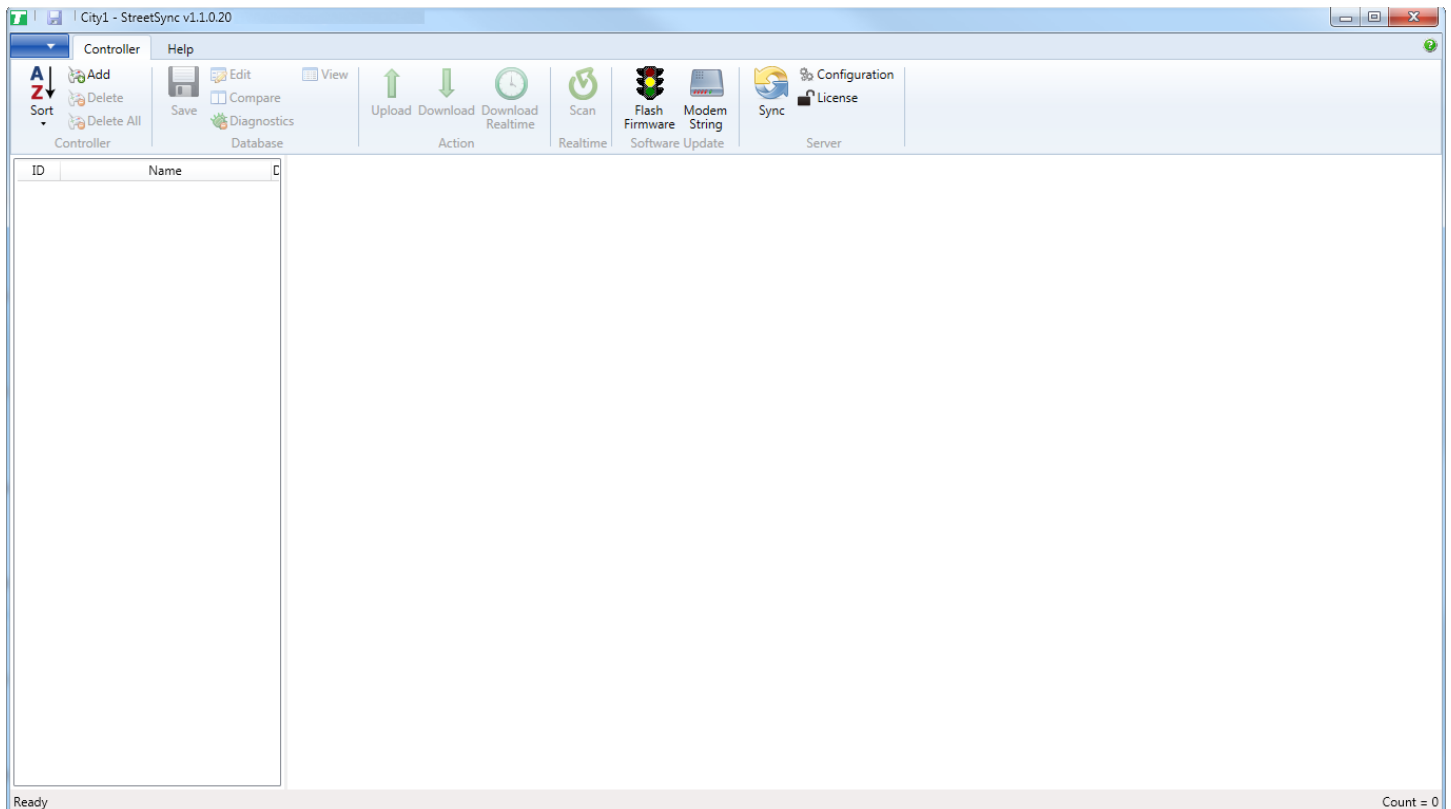


License

Each time you install StreetSync on a PC you need to license it with Cubic | Trafficware. The following screen will appear for you to enter and validate your license. *Please contact your Cubic | Trafficware representative to acquire a license.*

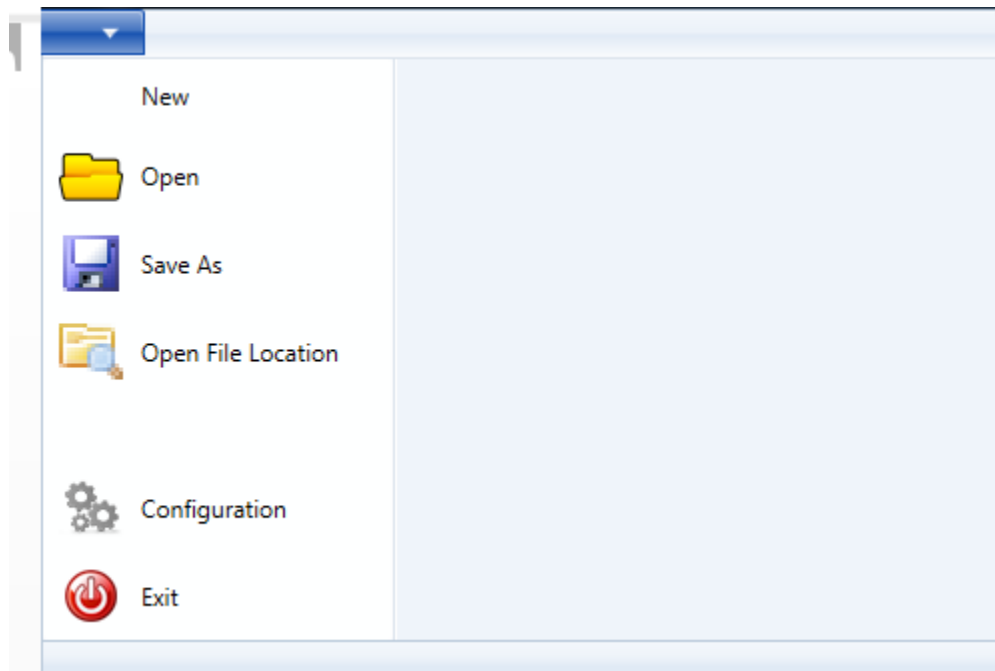


Once licensed, the following screen will appear:



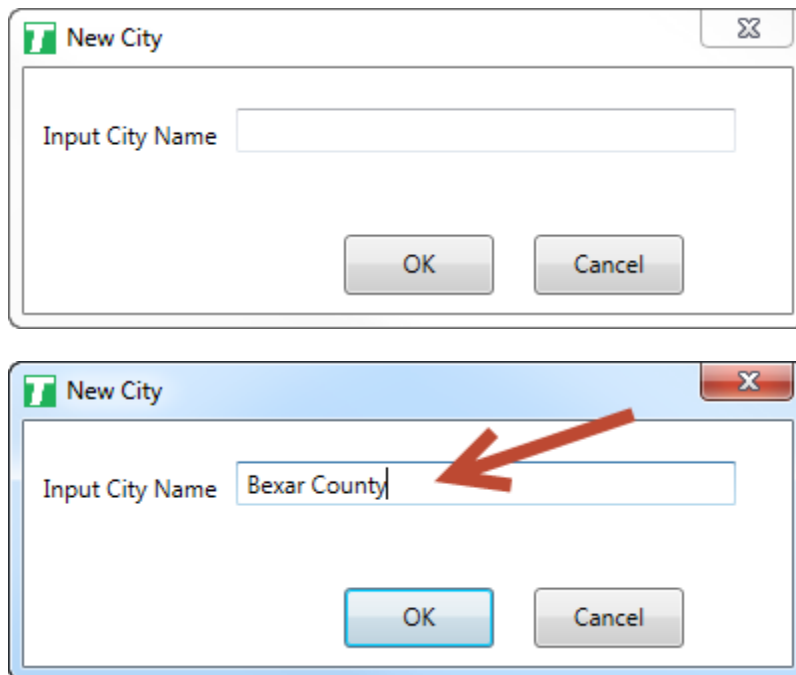
Selection Drop-Down Menu

StreetSync allows the agency to be able to save multiple jurisdictions to separate StreetSync Files. This can be helpful for larger agencies.

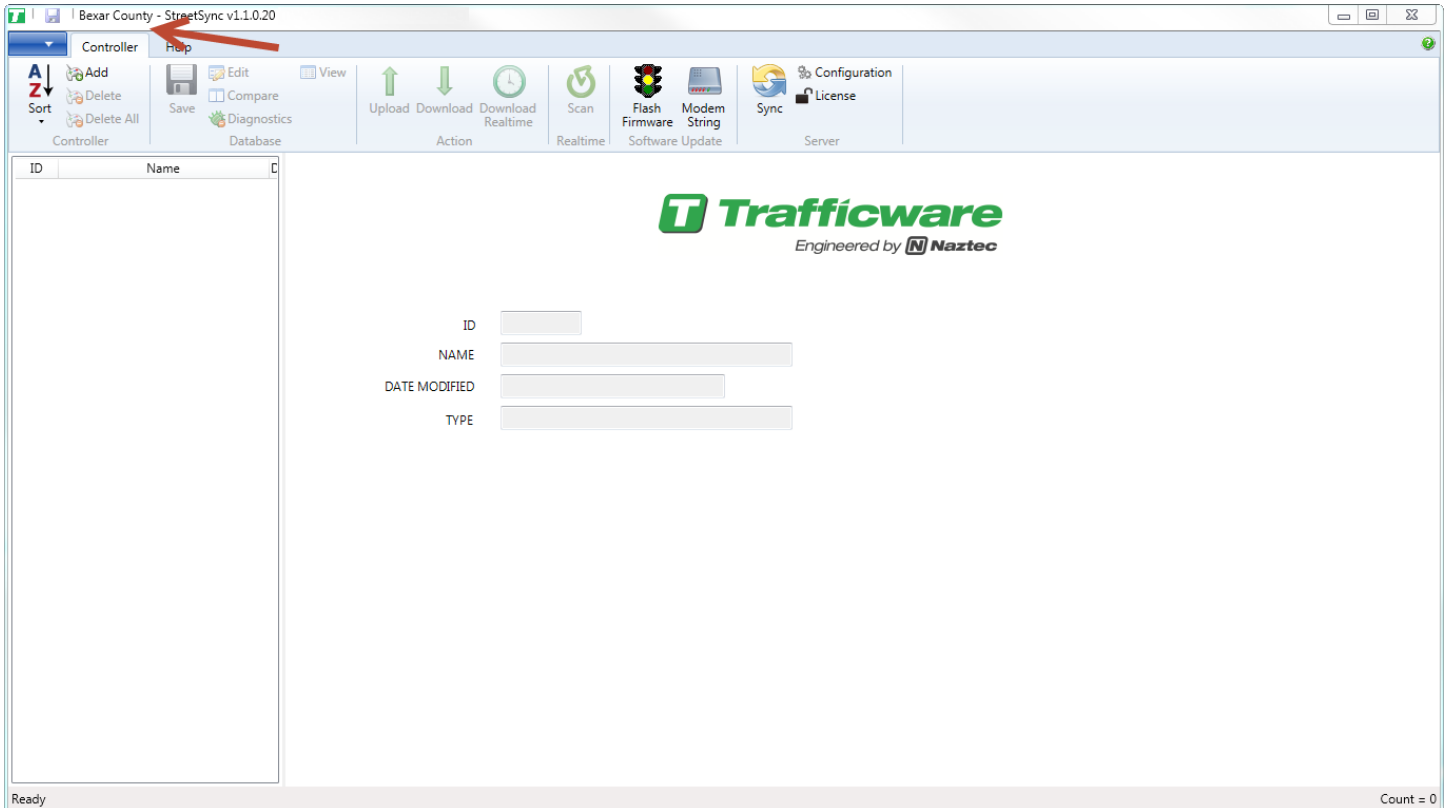


New City/Jurisdiction

Whenever you bring up StreetSync for the first time you **must** create a city/jurisdiction. To create a new city/jurisdiction select **New** and the following screen will come up for you to enter the City, County or Jurisdiction name.

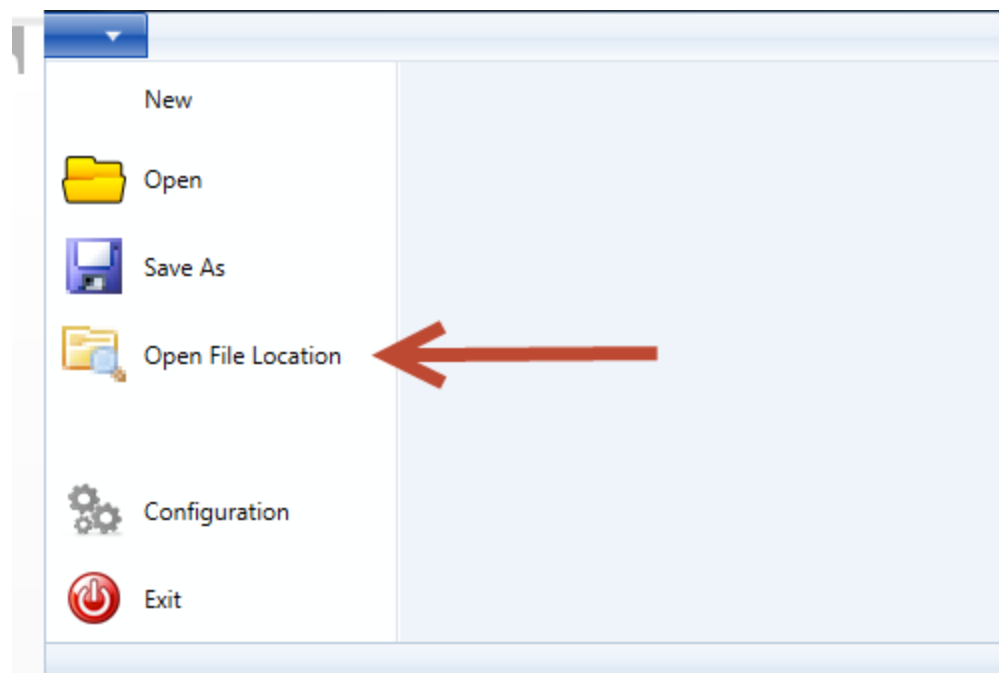


Once the new city/jurisdiction is created, the title bar will change to reflect the file.

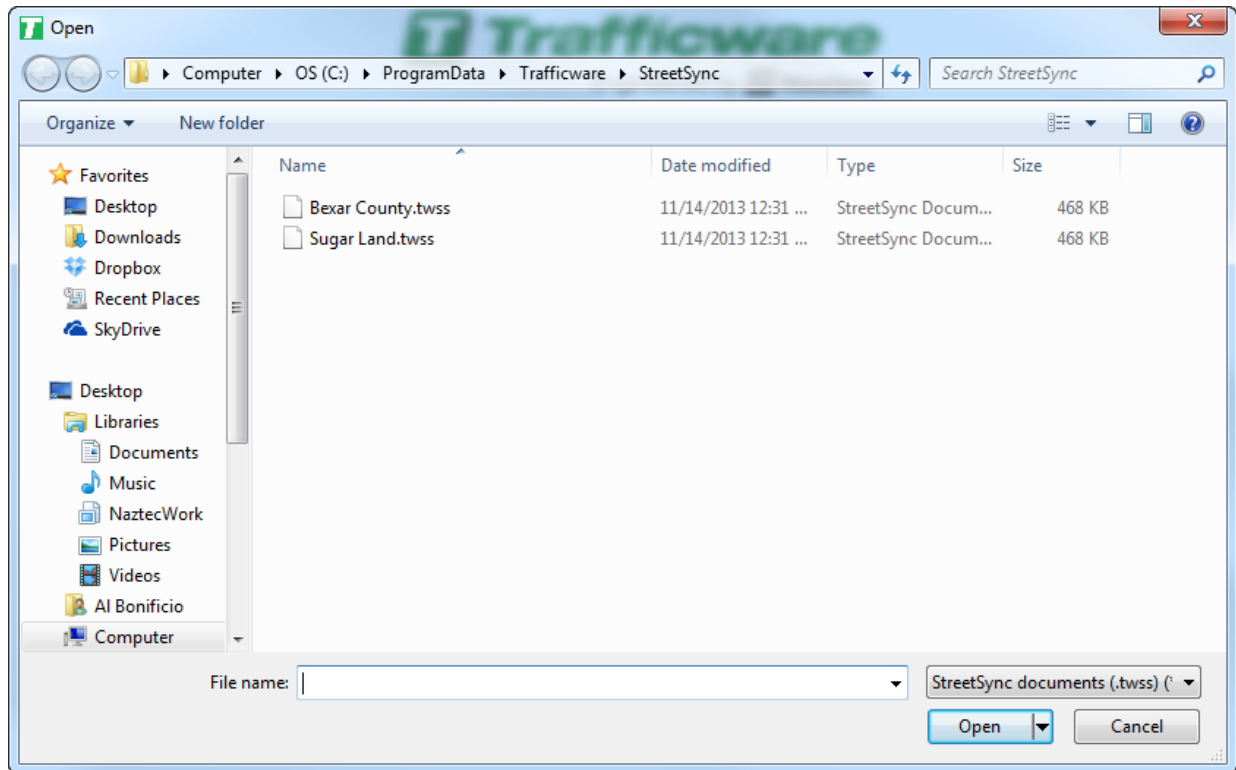


Viewing all City/Jurisdictions

Go to the Selection Drop Down menu and choose **Open File Location**.

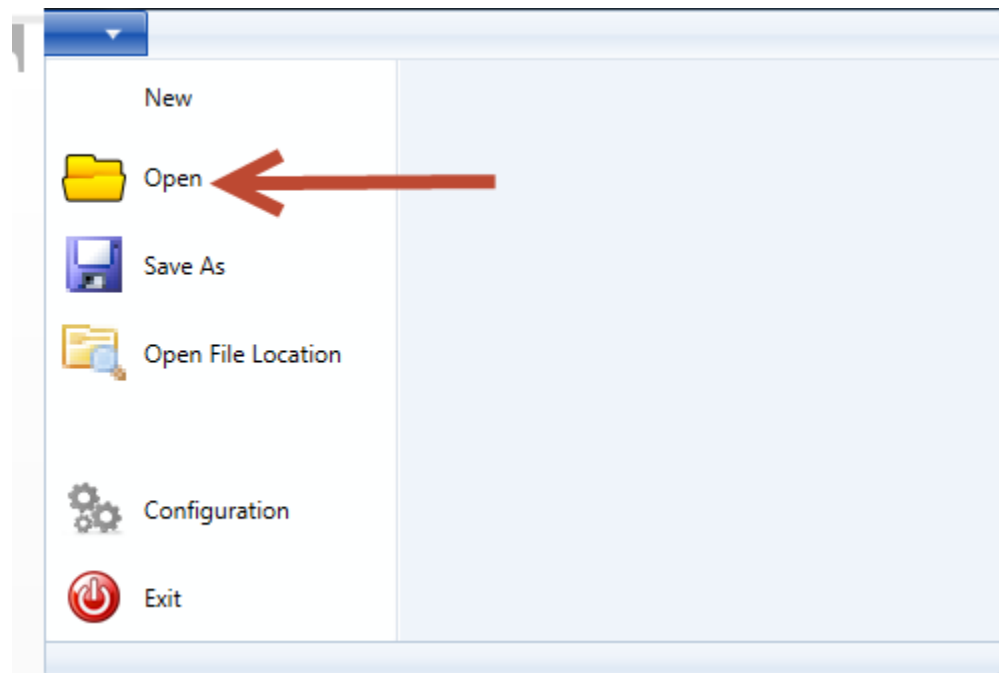


The following browser screen will be displayed.

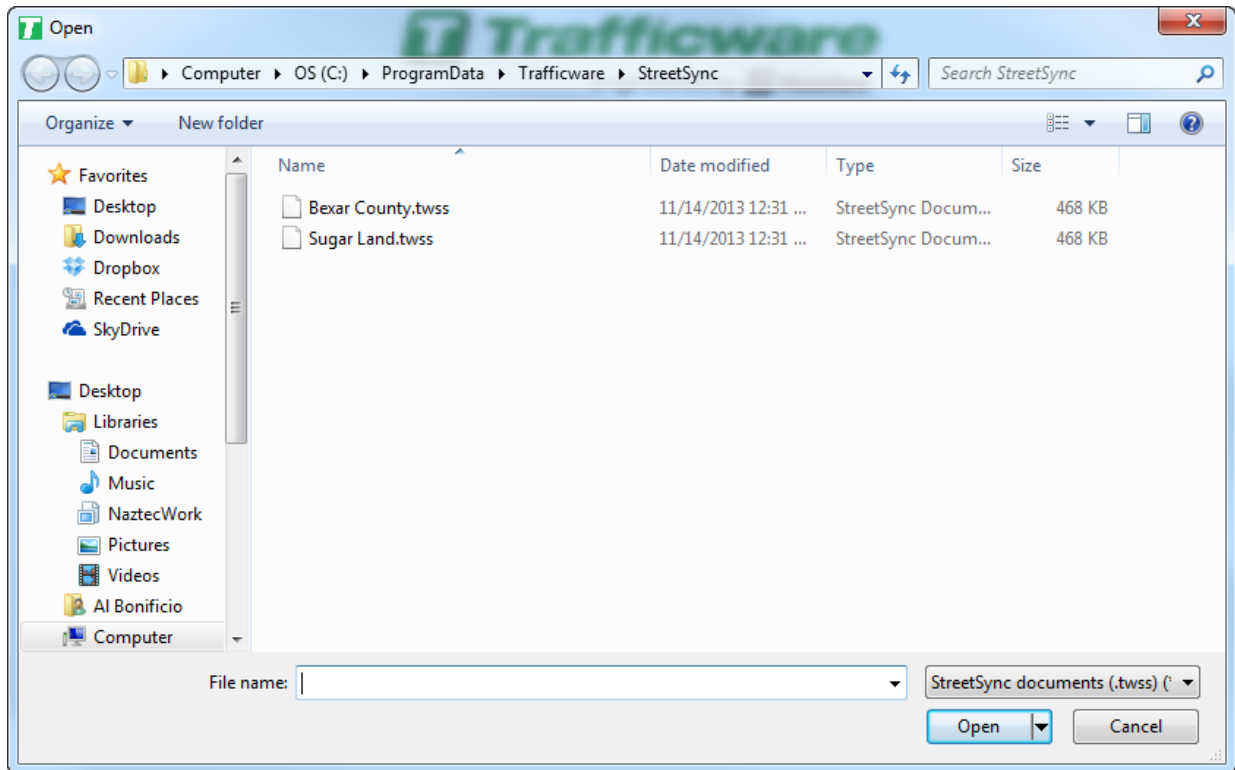


Switch to another City/Jurisdiction

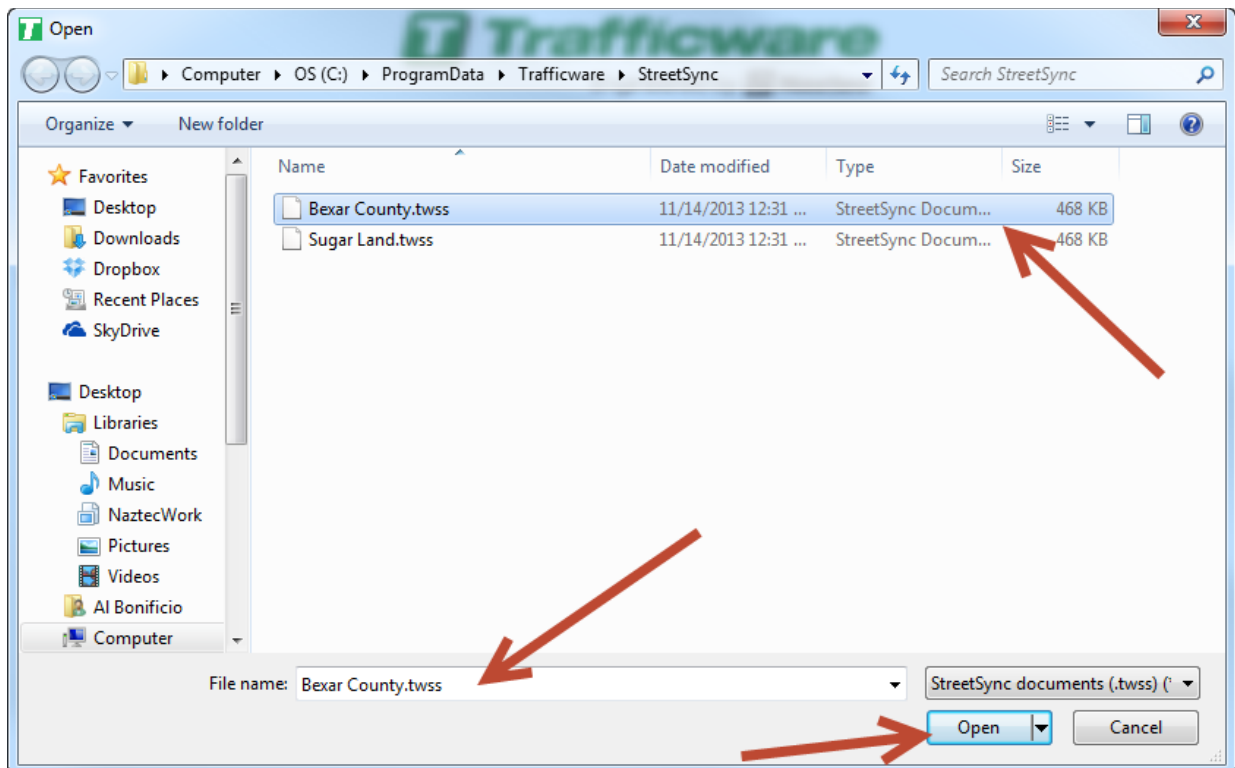
Go to the Selection Drop Down menu and choose **Open**.



The following browser screen will be displayed.



Note: Each city created has the extension .twss which will contain the database information for the city/jurisdiction. Select and open the file you want to access.

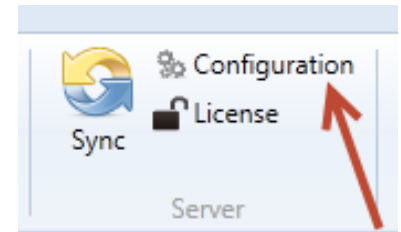


Once you have created a City/Jurisdiction you are ready to configure StreetSync for the interface to ATMS or to create standalone controllers.

Configuration

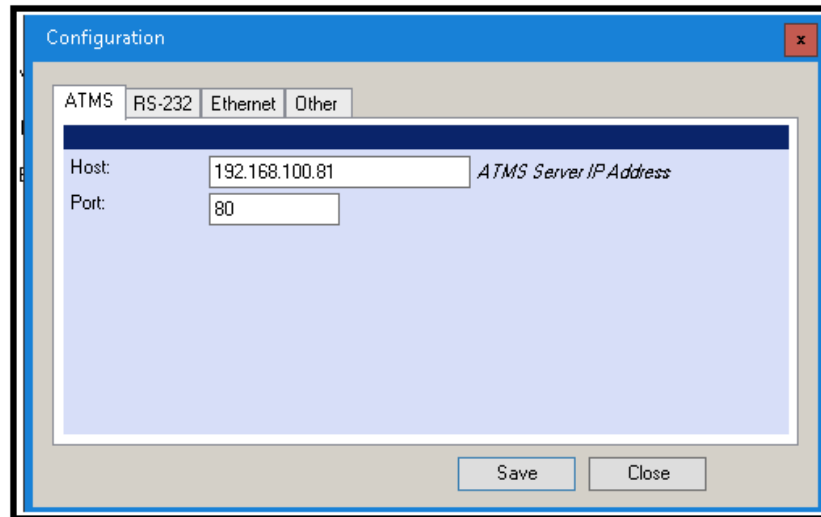
From the Toolbar you must first configure StreetSync to access ATMS by using the configuration button in the server section.

The configuration screen will have three Tabs that will allow the user to configure StreetSync as shown below. There are three tabs that contain configuration parameters and they are described below.



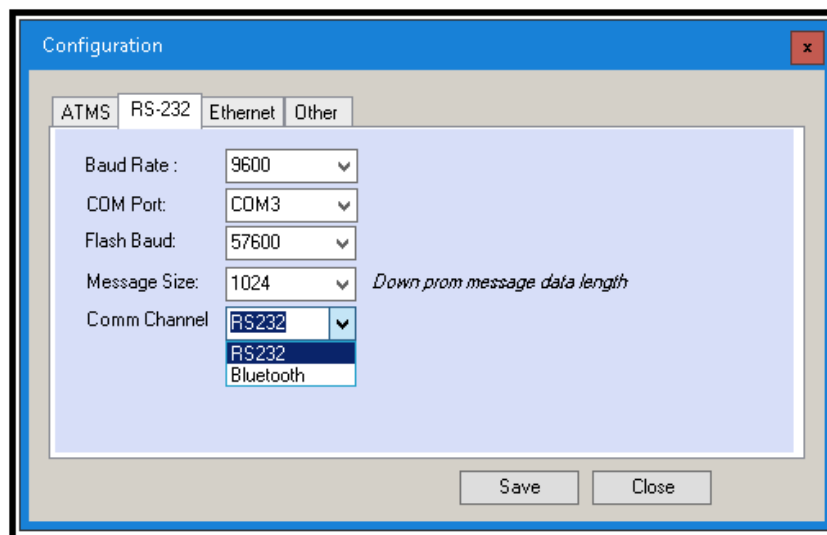
ATMS

This screen allows the user to choose the ATMS **Server** used to get the controller list during the Sync Action and the **Port** number of that server (typically Port 80).



RS-232

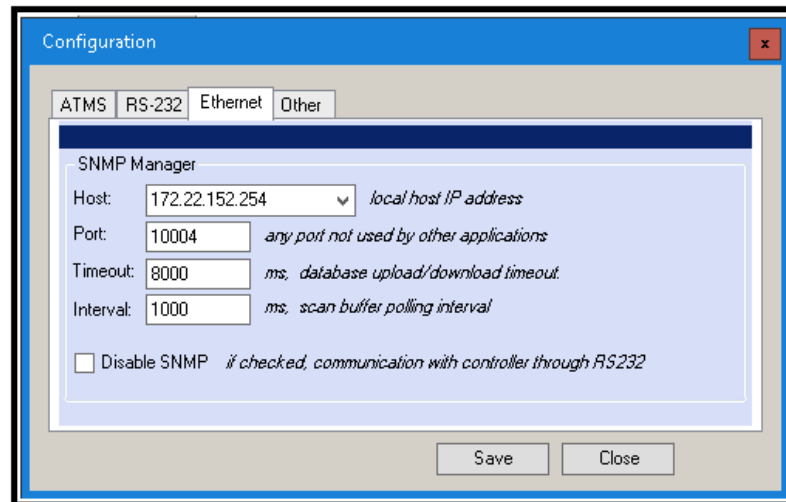
The user will be able to set up the **COMM Channel** (RS232 or Bluetooth) **COMM Port** and the **Baud Rate** (9600 Baud-57600 Baud) to be used for the laptop device that will connect to the controller. The user can also set up a **Flash Baud Rate** (9600 Baud-57600 Baud) when "Flashing" firmware to a TS2 controller or MMU. The user should also set up The Flash Firmware Message Length to insure that the headers are sent to the controller.



NOTE: The Baud Rate and Flash Baud Rate for an MMU should be set to 9600 and the Message Size should be set to 512.

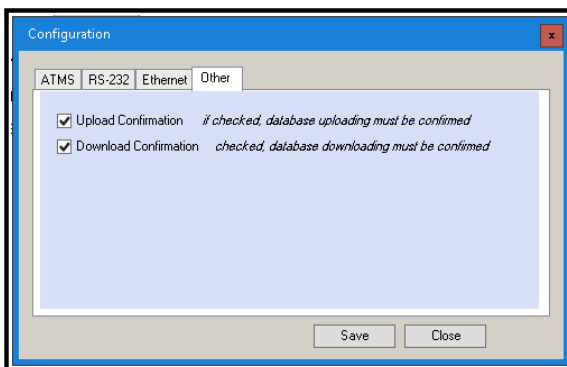
Ethernet (Available for Controllers using Scout [V85.x] software ONLY)

Controllers using *Scout [V85.x]* software can (and should) communicate using a direct connect Ethernet cable. The user must program the **Host** IP address (the IP of the laptop using StreetSync), the IP **Port** that the laptop will use to communicate to the controller, a communications **Timeout** parameter (in milliseconds) and a polling **Interval** used in association with the scan buffer when scanning the live data from an intersection. If you are communicating with a V80 controller, you should use Ethernet but if it is unavailable, you can check the Disable SNMP box to communicate via RS232. Keep in mind that a typical Ethernet upload will be substantially quicker than RS232.

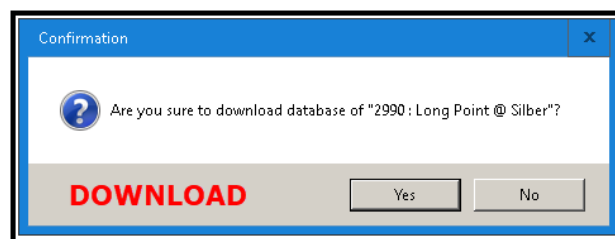
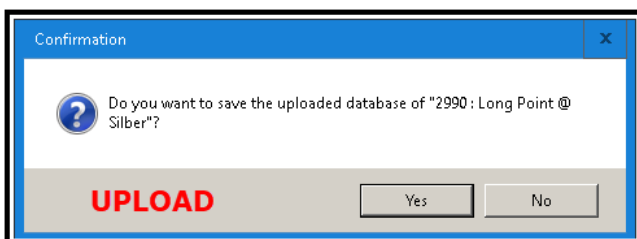


Other (Confirmation of Uploads/Downloads)

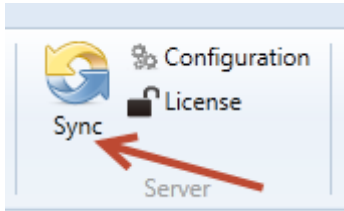
If the agency requires its staff to confirm that they want to perform a database upload or download, then check the confirmation boxes under the **Other** tab as shown below.



When selected then a Confirmation Message will be displayed that will require the user to confirm before saving the uploaded database or starting the download as shown below.



Sync



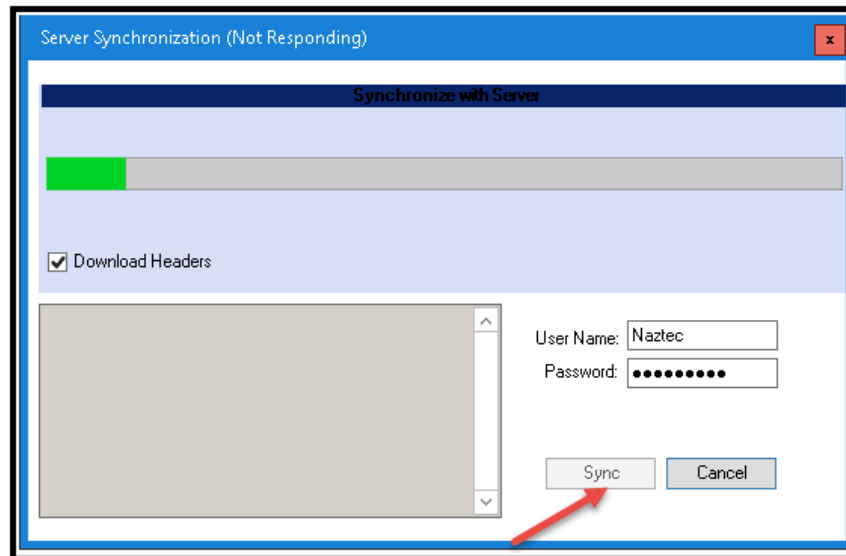
When the user clicks the Sync Action in the server section, the system will display the Sync action item as shown below.

A screenshot of a 'Server Synchronization' dialog box. The title bar is blue with the text 'Server Synchronization' and a close button. Below the title bar is a dark blue header with 'Synchronize with Server'. The main area is light blue and contains a 'Download Headers' checkbox, a large empty text area with a scrollbar, and input fields for 'User Name' and 'Password'. At the bottom right are 'Sync' and 'Close' buttons.

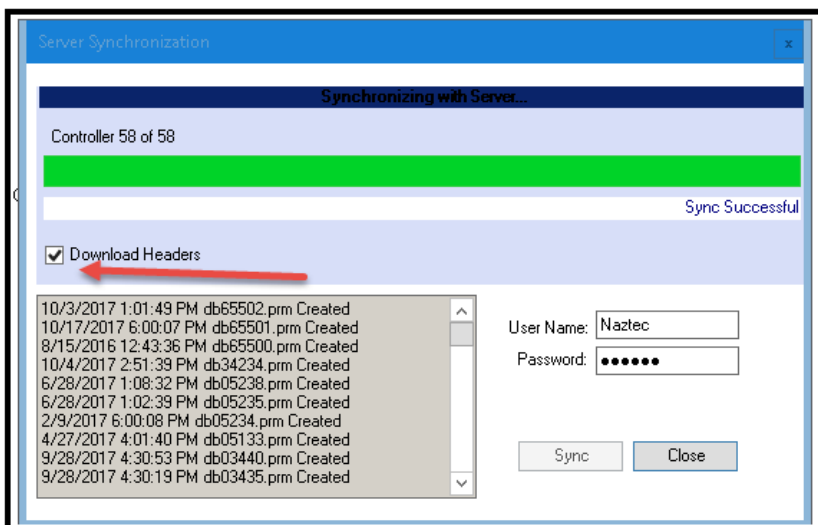
Logging into the ATMS server is required for syncing. In addition, the log-in will reflect the jurisdictional control that is set up in ATMS. Therefore, by logging-in the user's StreetSync database will only synchronize the databases that they are allowed to use. The user must provide a username and password as shown below.

A screenshot of the same 'Server Synchronization' dialog box. The 'User Name' field now contains the text 'Naztec'. The 'Password' field is filled with dots. A red circle highlights the 'User Name' and 'Password' fields. The 'Sync' and 'Close' buttons are still at the bottom right.

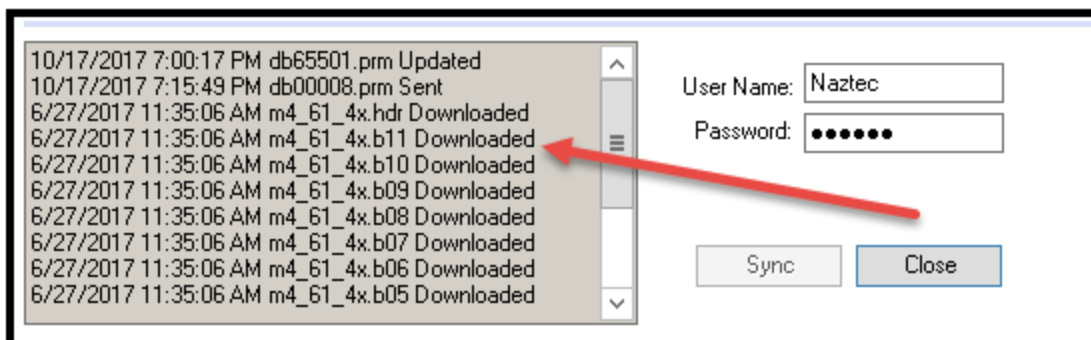
Selecting Sync will begin the Synchronization process. While the Synchronization process occurs, a progress bar indicating how much of the controller data set has been synchronized with the server. The user may cancel the operation at any time.



Please note that the user can select Download Headers if it is desired to download firmware to TS2 controllers. StreetSync will search for the server directory **...Naztec/Nazserv/Downprom** for the TS2 firmware data and header files and place it in the **Downprom** folder of the StreetSync City directory.



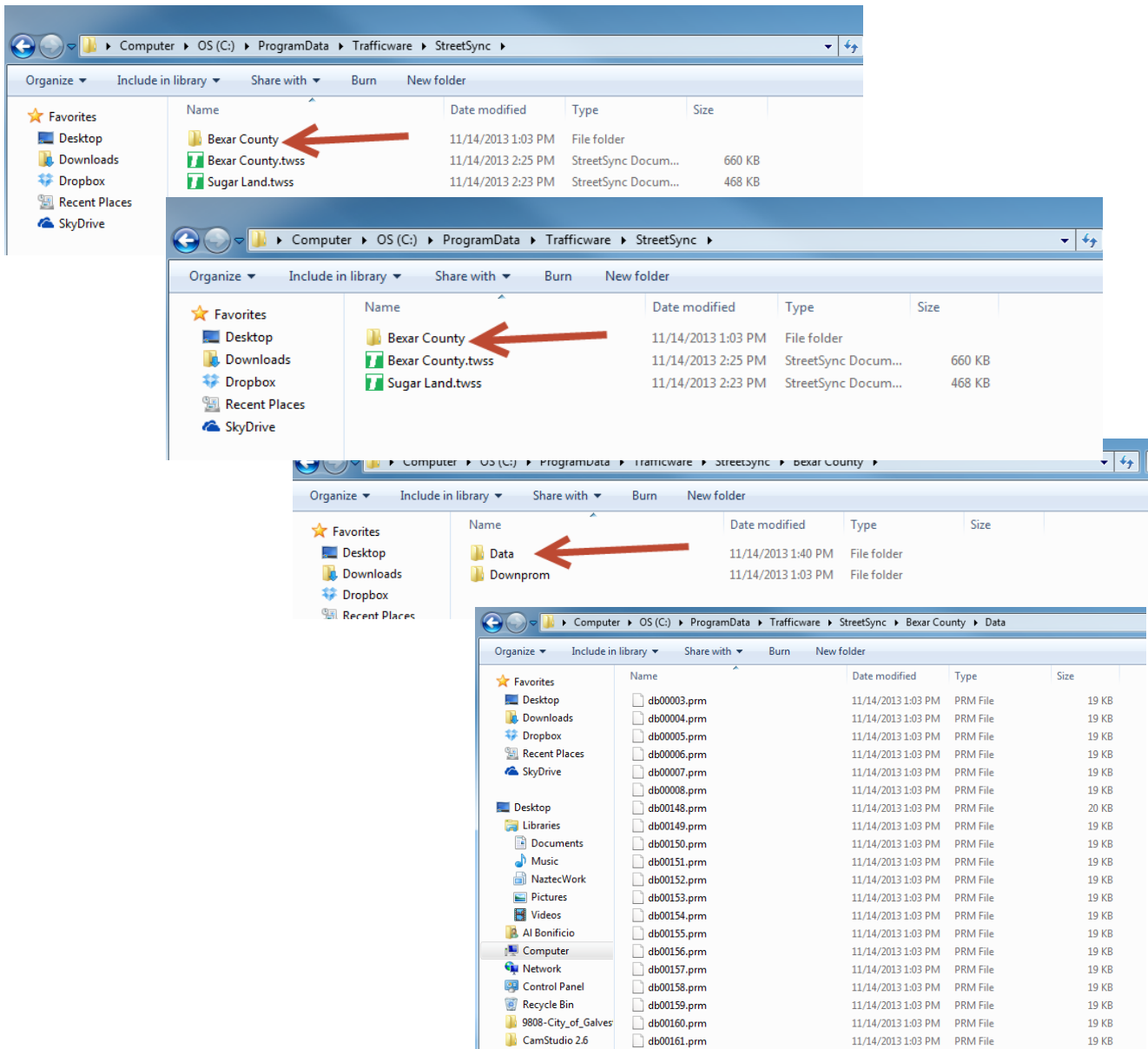
When the Sync is completed, a list of controllers will be displayed. Please note that the status of the transfer from ATMS to StreetSync is also displayed on the left side of the screen as shown below.



Considerations: Synchronizing Software

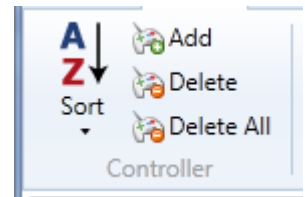
For existing controllers, the synchronization logic first compares the timestamps of the Upload file in ATMS with the “Last Updated” timestamp in ATMS StreetSync. If the “Last Updated” timestamp in StreetSync is newer than the Upload file in ATMS, the controller settings from StreetSync are copied to the Upload file of the corresponding controller in ATMS. If the Upload file in ATMS is equal to or newer than the “Last Updated” timestamp in StreetSync, then the timestamp of the Permanent file in ATMS is compared to the “Last Updated” timestamp in StreetSync. If the timestamp of the Permanent file in ATMS is newer than the “Last Updated” timestamp in StreetSync, then the Permanent file of the controller in ATMS is copied to StreetSync. Finally, if the controller name or type is different between ATMS and StreetSync, then the Permanent file of the controller in ATMS is copied to StreetSync.

Once synchronized StreetSync will create folders with the data as shown below.



Controller Section

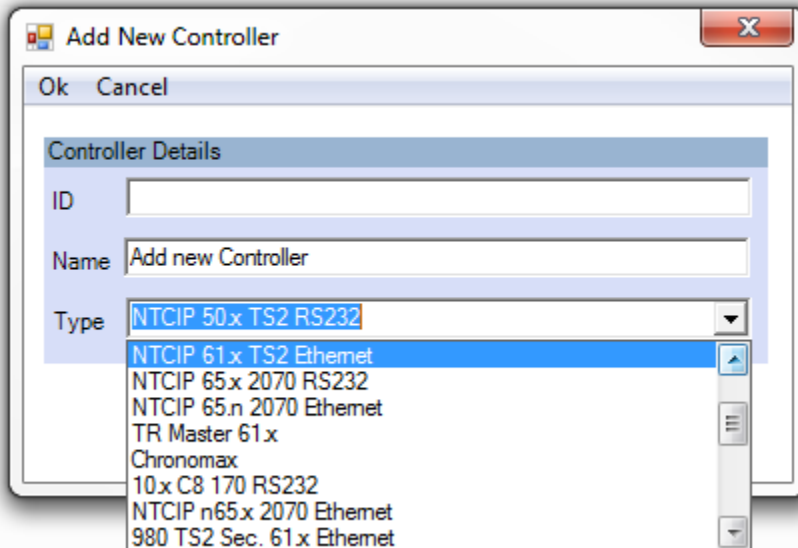
The controller section menu allows the user to modify the controller database that StreetSync utilizes.



Add

If you add a new controller to the StreetSync database, the following screen will be displayed.

Important: If you create a new controller on the laptop, it will be highlighted as a different color in the controller List Pane and will not be part of the ATMS configuration.



ID: Choose an ID that is not in the database. Valid ID numbers are 1-9999.

NAME: Give a description of this controller.

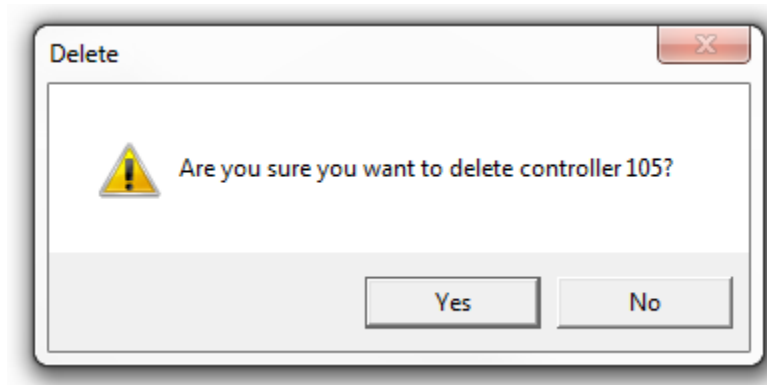
TYPE: this is the type of controller that you are communicating with. The types are listed below:

10.x C8 170 RS232
2070 LCS Ethernet
2070 LCS Ethernet New
50.x TS2 RS232
61.x TS2 RS232
900 Houston Secondary RS 232
980 TS2 Sec. 50.x Ethernet
980 TS2 Sec. 61.x Ethernet
980 TS2 Secondary 41.x
981 TS2 Master 41.x
981 TS2 Master 61.x
981 TS2 Master 61.x Ethernet
Chronomax
Chronomax Ethernet
NTCIP 50.x TS2 RS232
NTCIP 61.x TS2 Ethernet
NTCIP 61.x TS2 RS232
NTCIP 65.x 2070 Ethernet
NTCIP 65.x 2070 Master Ethernet
NTCIP 65.x 2070 Master RS-232
NTCIP 65.x 2070 RS232

NTCIP 70.x 2070 Ethernet
NTCIP 70.x 2070 RS232
NTCIP 76.x 2070 Ethernet
NTCIP 76.x 2070 RS232
NTCIP 76.x ATC Ethernet
NTCIP 76.x ATC RS-232
NTCIP 80.x 2070 Linux Ethernet
NTCIP 80.x 2070 Linux RS-232
NTCIP 80.x 2070 OS9 Ethernet
NTCIP 80.x 2070 OS9 RS-232
NTCIP Ethernet MASTER 1.48
v65 Ethernet Virtual Controller
v76 Ethernet Virtual Controller

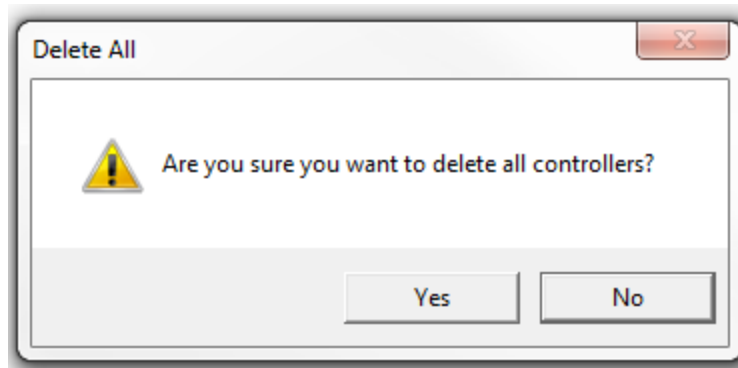
Delete

To delete a controller from the Street Sync Database, select it and select **Delete**. A confirmation screen will appear. By selecting **Yes**, the controller will be deleted.



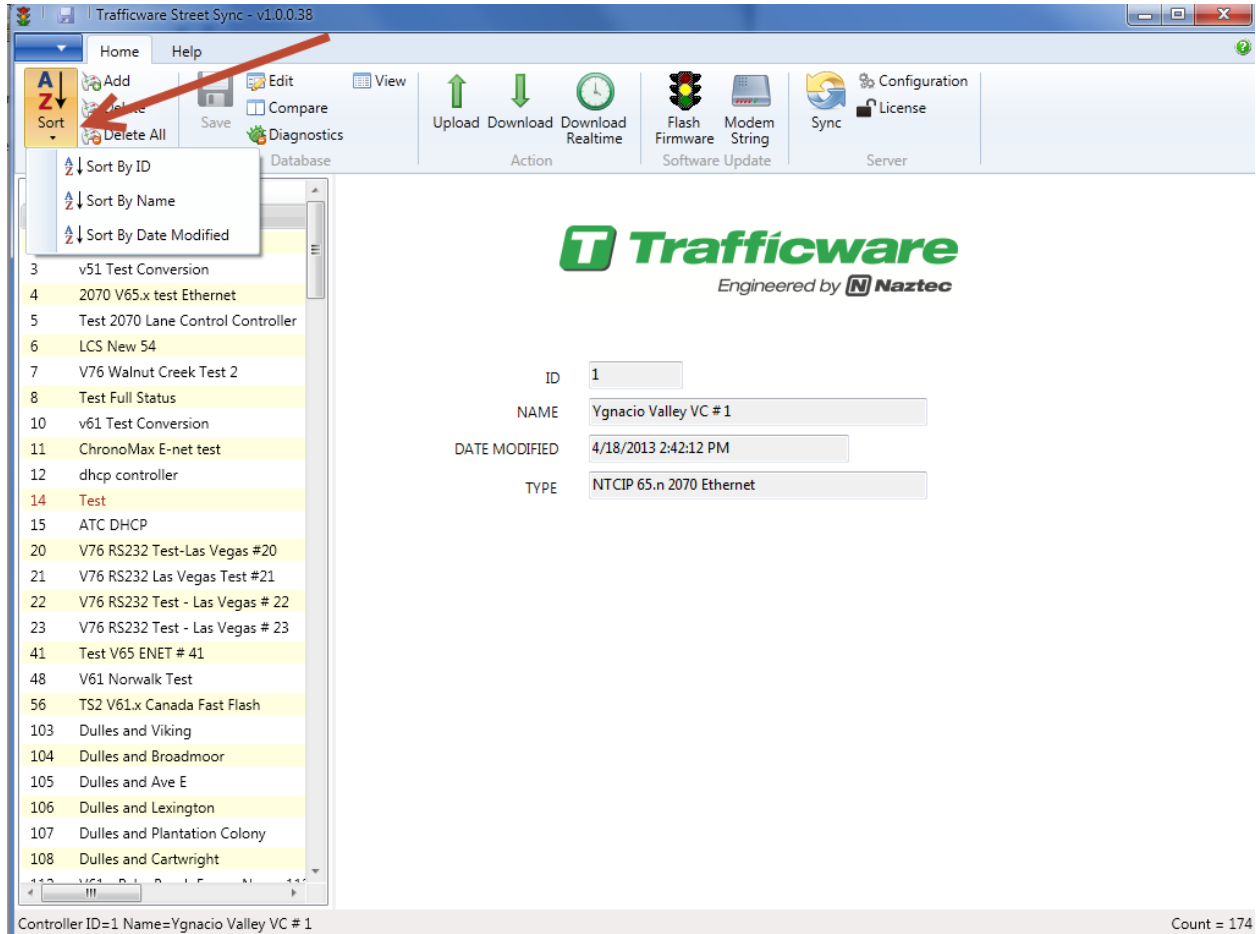
Delete All

This selection will delete all controllers from the StreetSync database. Again, a confirmation screen will appear.



Sort By ID, Sort By Name

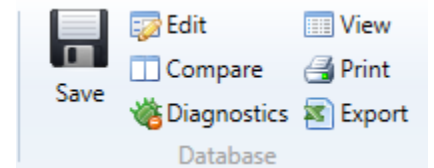
You can sort the database by ID Number, by controller name or by the date modified by this selection or by double-clicking on the column fields in the List pane.



Database Section

The Database Section allows the user to select a database and view, modify and save database parameters for each controller. Once a user selects a controller the user can access this section.

NOTE: The Database Section is enabled using a machine specific license key. Contact your Cubic | Trafficware representative on information on acquiring this capability.



View

This selection allows the user to view data. The info bar on the overview pane will be highlighted in gray when view is selected. StreetSync provides a database Filter for easy navigation to the specific database category of the selected database. The Filter categorizes the database according to the database categories provided in the controller. When a category is selected, the affiliated sub-categories will display in tabs within the window. If "All" is selected, every database tab will be displayed. The database tabs display and operate similar to Microsoft Excel.

Controller #14 - Phase Times and Options

Phase	Wal	Ped Clearanc	Min Gree	Passage	Max	Max	Yello	Red	Red Rever	Added Initi	Max Initi	Time Before Reduc	Cars Before Reduc	Time To Reduc	Reduce B
Phase 1	0	0	3	1	20	50	3.5	1.5	0	0	0	0	0	0	0
Phase 2	5	7	3	1	20	50	3.5	1.5	0	0	0	0	0	0	0
Phase 3	0	0	3	1	20	50	3.5	1.5	0	0	0	0	0	0	0
Phase 4	5	7	3	1	20	50	3.5	1.5	0	0	0	0	0	0	0
Phase 5	0	0	3	1	20	50	3.5	1.5	0	0	0	0	0	0	0
Phase 6	5	7	3	1	20	50	3.5	1.5	0	0	0	0	0	0	0
Phase 7	0	0	3	1	20	50	3.5	1.5	0	0	0	0	0	0	0
Phase 8	5	7	3	1	20	50	3.5	1.5	0	0	0	0	0	0	0
Phase 9	0	0	0	0	0	0	3.5	1.5	0	0	0	0	0	0	0
Phase 1	0	0	2	0	0	0	3.5	1.5	0	0	0	0	0	0	0
Phase 1	0	0	0	0	0	0	3.5	1.5	0	0	0	0	0	0	0
Phase 1	0	0	0	0	0	0	3.5	1.5	0	0	0	0	0	0	0

Table 1

Adv Warning / Auto Flash / Auto Flash Params / Channel Params / Channels Assignments / Channels Assignments Plus / MMU to Controller Mapping / MMU Permissions / Console Params / Detector Params / Ped Params / Overlap Alternate / OverlapB+ / Overlap Params / Overlap+ / Overlap Plus Params / Overlap Programming / Call Inhibit Redirect Alt / Phase Options Alt / Phase Times and Options / Phase Times+ Alt / Phase Times+ / Phase Times+ and Options+ / Phase Times Alt / SDLC Devices / Ring Input Map / Ring Sequences / TOD Parameters / SDLC Params / Unit Params

Filter: Controller

Controller ID=14 Name=Test V76 FYA E-net has been saved

Count = 178

Edit

This selection allows the user to edit and modify data. The info bar on the overview pane will be highlighted in blue when view is selected. StreetSync provides a database Filter for easy navigation to the specific database category of the selected database. The Filter categorizes the database according to the database categories provided in the controller. When a category is selected, the affiliated sub-categories will display in tabs within the window. If "All" is selected, every database tab will be displayed. The database tabs display and operate similar to Microsoft Excel.

The screenshot shows the StreetSync v2.0.2.5 professional interface. The 'Edit' menu item is highlighted in the top menu bar. Below the menu bar, there is a toolbar with various icons for actions like Add, Delete, Save, Compare, Print, Upload, Download, Scan, Flash, Modem, Sync, and License. The main window displays a list of controllers on the left and a detailed data table for Controller #2990 on the right. The table is titled 'Phase Times and Options(1.1.1/1.1.2/1.1.4)' and contains columns for Phase, Min, Grn, Gap, Ext, Max 1, Max 2, Vel, Clr, Red, Clr, Walk, Ped, Clr, Red, Rev, Add, Init, Max, Init, Gap, Reduce, Time, B4, Gap, Reduce, Cars, B4, Reduce, Gap, Reduce, Time, To, Gap, Reduce, Reduce, By, Ga. The table lists 20 phases with their respective parameters. At the bottom of the window, there is a filter section with a dropdown menu set to 'Controller' and a text box labeled 'Category Display' with 'Full Name' entered. The status bar at the bottom indicates 'Controller ID=2990 Name=Long Point @ Silber' and 'Count = 144'.

NOTE: After editing data in a cell the user **MUST** click on another cell for the editing change to be saved to the StreetSync database.

The Category Display section (**Scout [V85.x] ONLY**) will display each tab using the named item, the controller menu Item (in ascending Numerical order) or Both (Full Name).

A screenshot of a dropdown menu titled 'Category Display'. The menu is open, showing three options: 'Full Name' (highlighted in blue), 'Name', and 'Controller Menu'.

Below is an example of the Controller Filter tab displays based on the Category display selection as shown below:

Name

A screenshot of the 'Controller Filter' tab. The 'Filter' dropdown is set to 'Controller'. The 'Category Display' dropdown is set to 'Name'. The main area displays a list of categories with their names, such as 'Adv Warning', 'Auto Flash Params', 'Auto Flash Phase/Overlap', 'Call Inhibit Redirect Alt', 'Channel Params', 'Channels Assignments', 'Channels Assignments Plus', 'CMU Permissives', 'Detector Params', 'General Overlap Parameters', 'ITS Cab Device', 'ITS Cab Device SIU Critical', 'Logging Purdue', 'MMU Permissives', 'MMU to Controller Mapping', 'Overlap Confl Prog+', 'Overlap Program Params+', 'Overlap Programming', 'Ped Params', 'Phase Options Alt', 'Phase Times Alt', 'Phase Times and Options', 'Phase Times+', 'Phase Times+ Alt', 'Phase Times+ and Options+', 'Ring Input Map', and 'Ring Sequences'.

Controller Menu

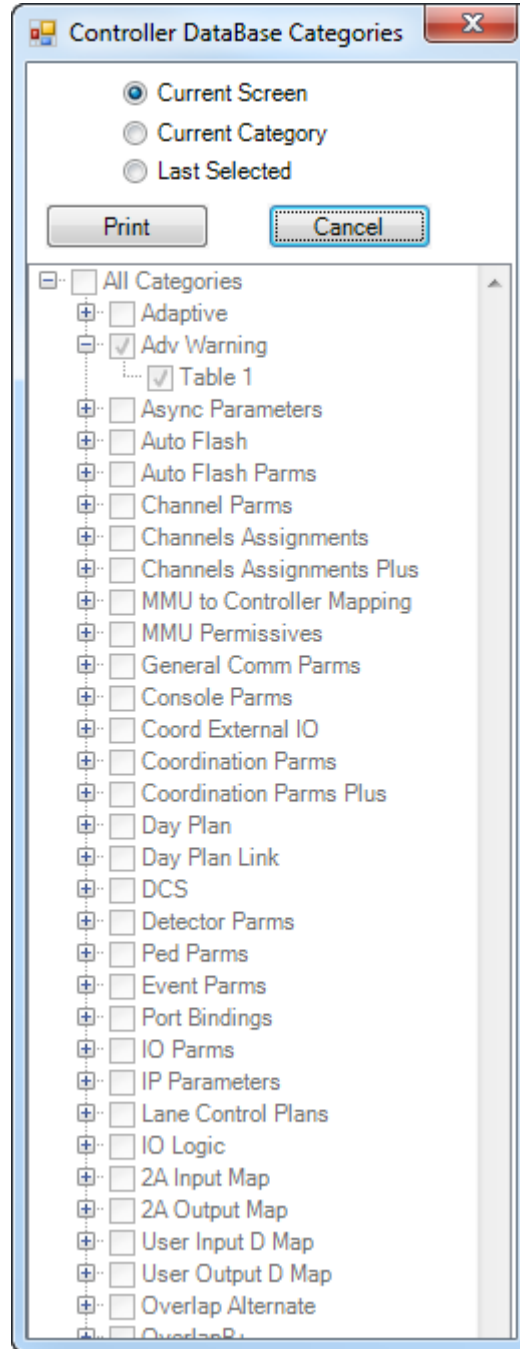
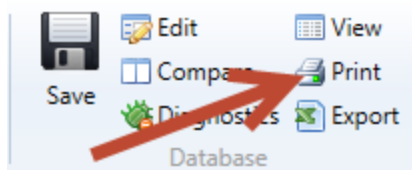
A screenshot of the 'Controller Filter' tab. The 'Filter' dropdown is set to 'Controller'. The 'Category Display' dropdown is set to 'Controller Menu'. The main area displays a list of categories with their numerical IDs, such as '1.1.1/1.1.2/1.1.4', '1.1.3/1.1.5', '1.1.6.1', '1.1.6.2', '1.1.6.3', '1.1.6.4', '1.1.7', '1.1.9', '1.2.1', '1.2.1.Ped', '1.2.1/1.8.3', '1.2.4', '1.2.5', '1.3.1', '1.3.3', '1.3.4', '1.3.5', '1.3.7/1.3.4', '1.3.7_', '1.3.9', '1.4.1', '1.4.2', '1.5.1', '1.5.2.X.1', '1.5.2.X.2', '1.5.2.X.3', '1.8.1/2', '1.8.4/1.8.5', '1.9.5', and '5.8.1'.

Full name

A screenshot of the 'Controller Filter' tab. The 'Filter' dropdown is set to 'Controller'. The 'Category Display' dropdown is set to 'Full Name'. The main area displays a list of categories with their full names and numerical IDs, such as 'Adv Warning(1.1.9)', 'Auto Flash Params(1.4.1)', 'Auto Flash Phase/Overlap(1.4.2)', 'Call Inhibit Redirect Alt(1.1.6.3)', 'Channel Params(1.2.1/1.8.3)', 'Channels Assignments Plus(1.8.4/1.8.5)', 'Channels Assignments(1.8.1/2)', 'CMU Permissives (1.3.9)', 'Detector Params(5.8.1)', 'General Overlap Parameters(1.5.1)', 'ITS Cab Device SIU Critical (1.3.7_)', 'ITS Cab Device(1.3.7/1.3.4)', 'Logging Purdue(1.9.5)', 'MMU Permissives(1.3.3)', 'MMU to Controller Mapping(1.3.5)', 'Overlap Confl Prog+(1.5.2.X.2)', 'Overlap Program Params+(1.5.2.X.3)', 'Overlap Programming(1.5.2.X.1)', 'Ped Params(1.2.1.Ped)', 'Phase Options Alt(1.1.6.2)', 'Phase Times Alt(1.1.6.1)', 'Phase Times and Options(1.1.1/1.1.2/1.1.4)', 'Phase Times+ Alt(1.1.6.4)', 'Phase Times+ and Options+(1.1.3/1.1.5)', 'Phase Times+(1.1.7)', 'Ring Input Map(1.2.5)', and 'Ring Sequences(1.2.4)'.

Print

While you are still in the edit screen, the user may print out selected sheets via the **Print** command. This command will allow the user to select tabs to print out to a printer. When **Print** is selected a drop down menu appears as shown below.



The user can select which sheets to print out via the radio buttons on the top of the screen.

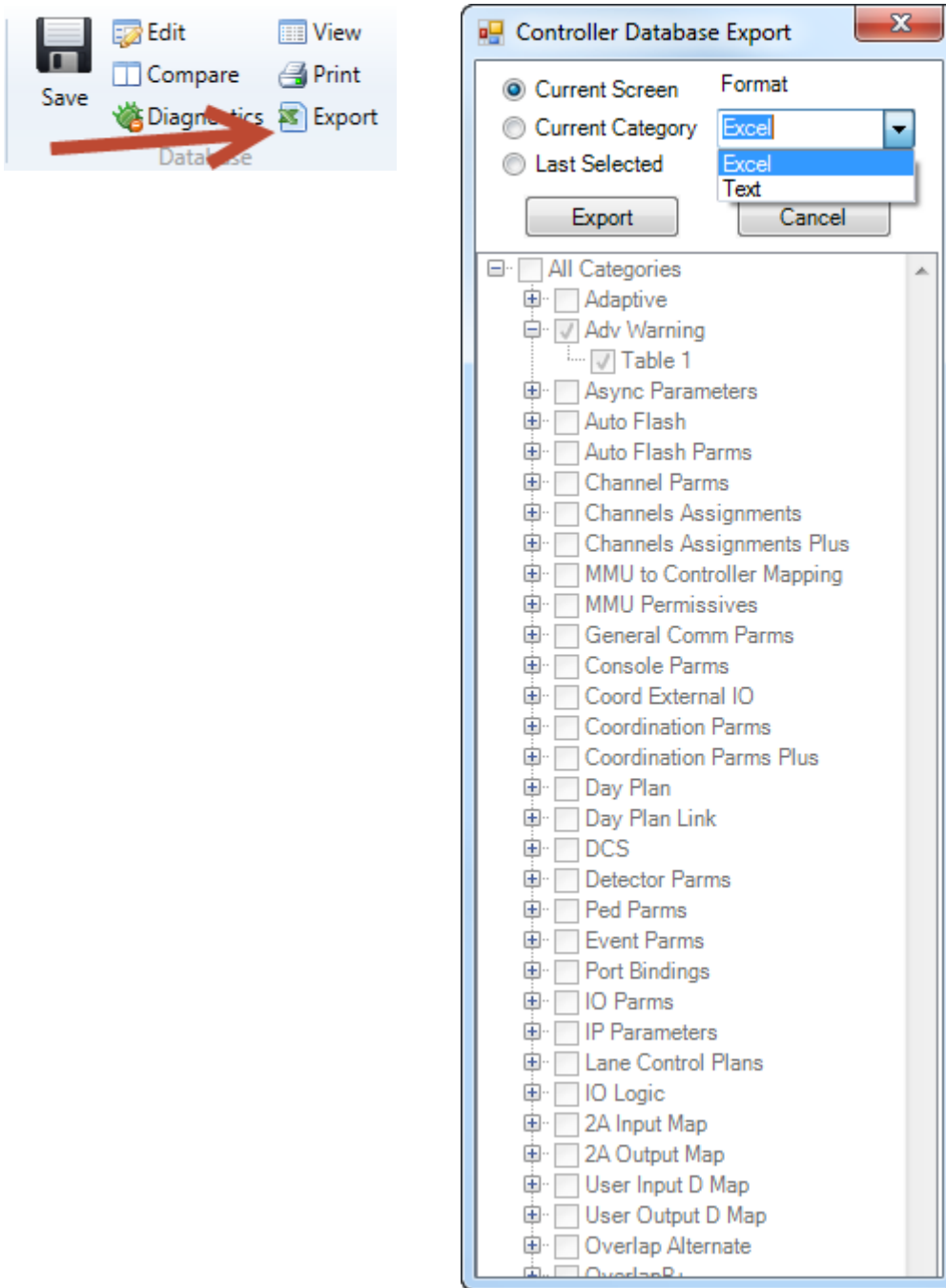
Current Screen will print the current screen being edited.

Current Category will print the current all the screens under the category that is being edited.

Last Selected will allow the user to select categories and/or screens to be printed including all screens.

Export

While you are still in the edit screen, the user may export selected sheets via the **Export** command. This command will allow the user to select tabs to export to an Excel or a text file. When **Export** is selected a drop down menu appears as shown below.



The user can select which sheets to export out via the radio buttons on the top of the screen.

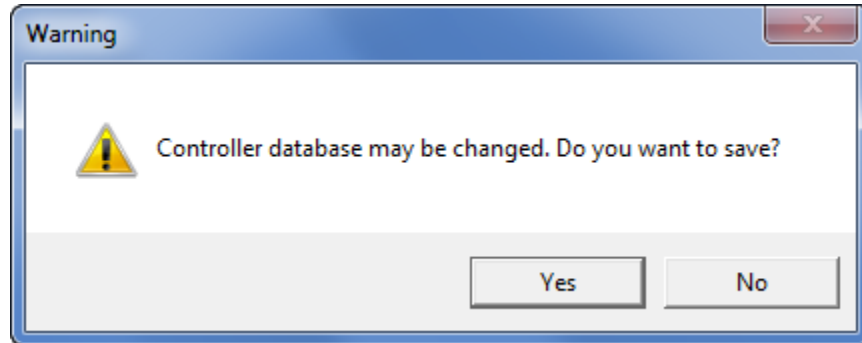
Current Screen will print the current screen being edited.

Current Category will print the current all the screens under the category that is being edited.

Last Selected will allow the user to select categories and/or screens to be printed including all screens.

Save

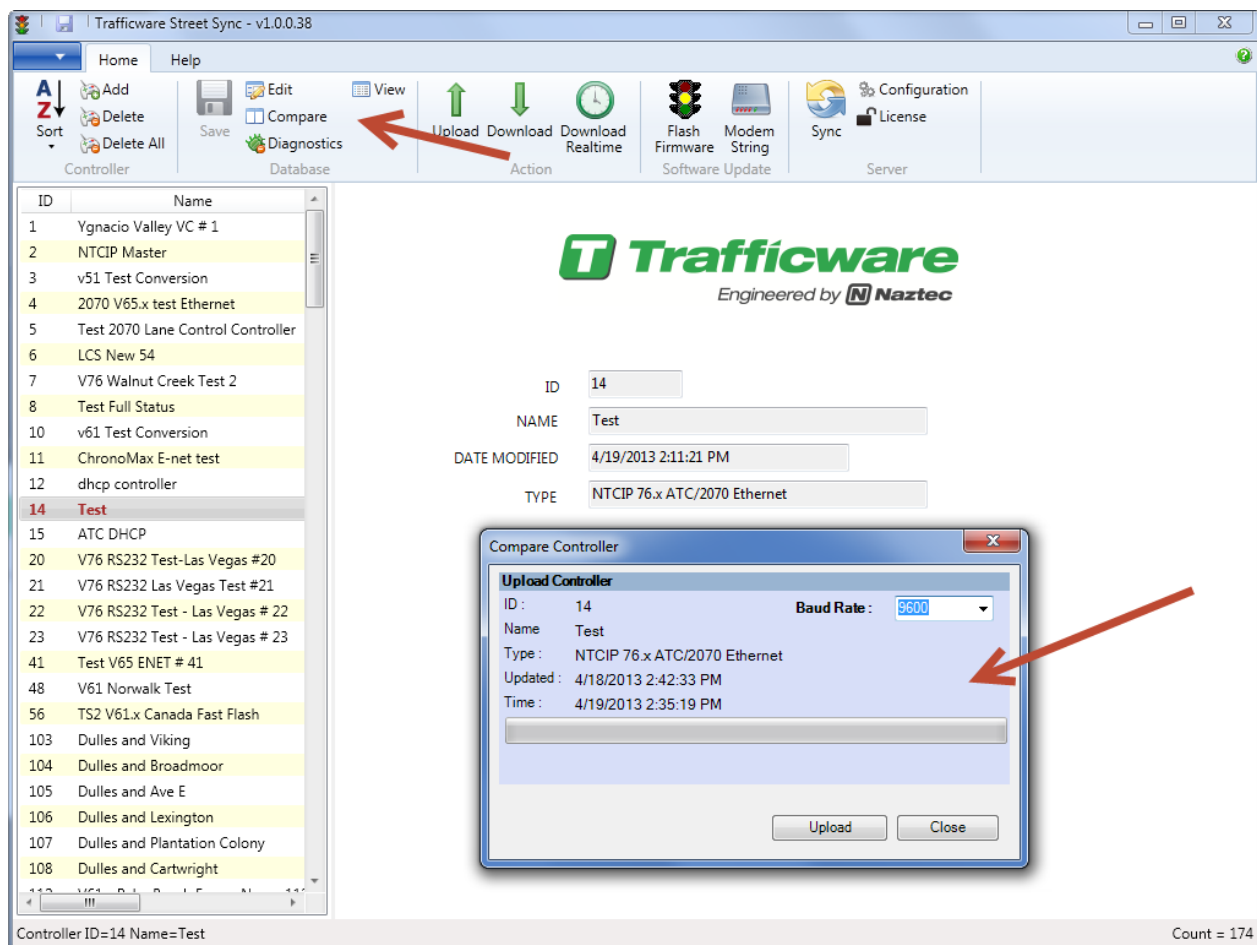
Once edits are completed, Save will write the changes to the database. After selecting Save, the following window will appear. Navigate to the Save Screen by clicking on another icon or menu item.



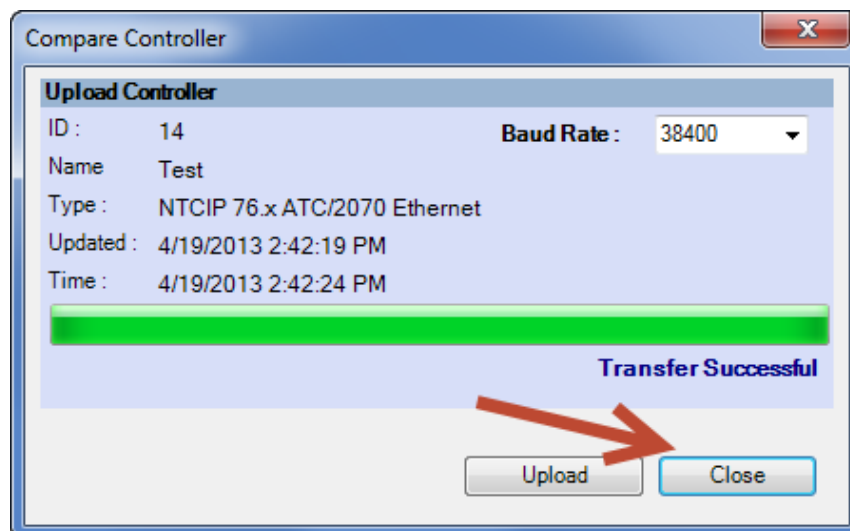
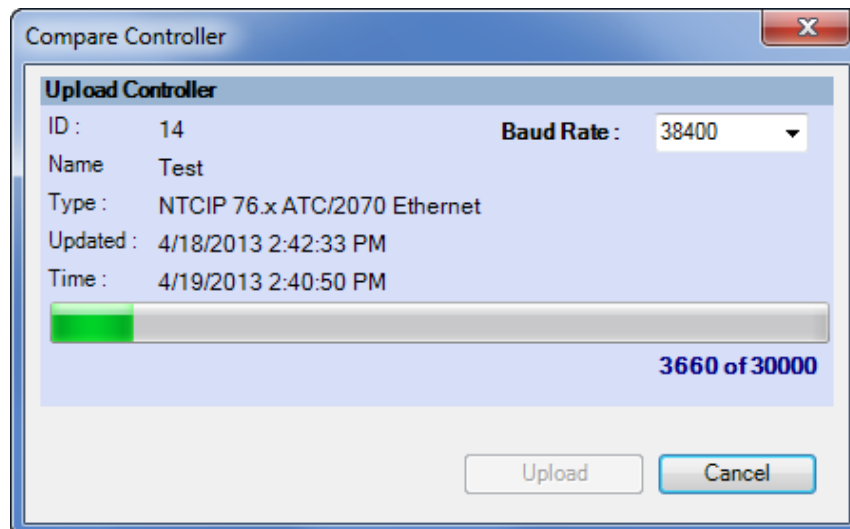
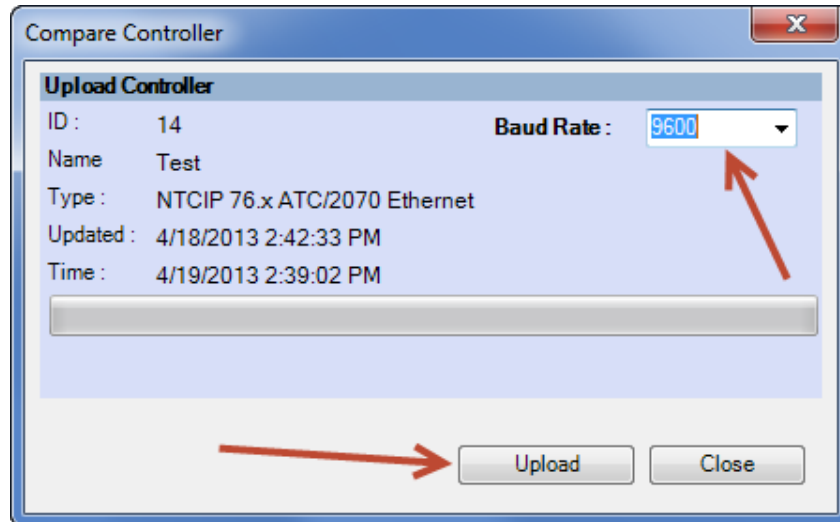
Selecting YES will save the database. All Data which is edited using StreetSync is saved on the /nazserv/data directory on the StreetSync PC. When editing is completed, the updated .prm file is then time stamped.

Compare

The user can compare the StreetSync database parameters with the controller's data. When accessing Compare, the Compare window will appear:



You can select the proper BAUD Rate to match your controller's serial communications speed via the drop down menu. Hitting Upload will begin the process of uploading data.



Once the upload is completed, select Close and the following will appear on the Overview Pane:

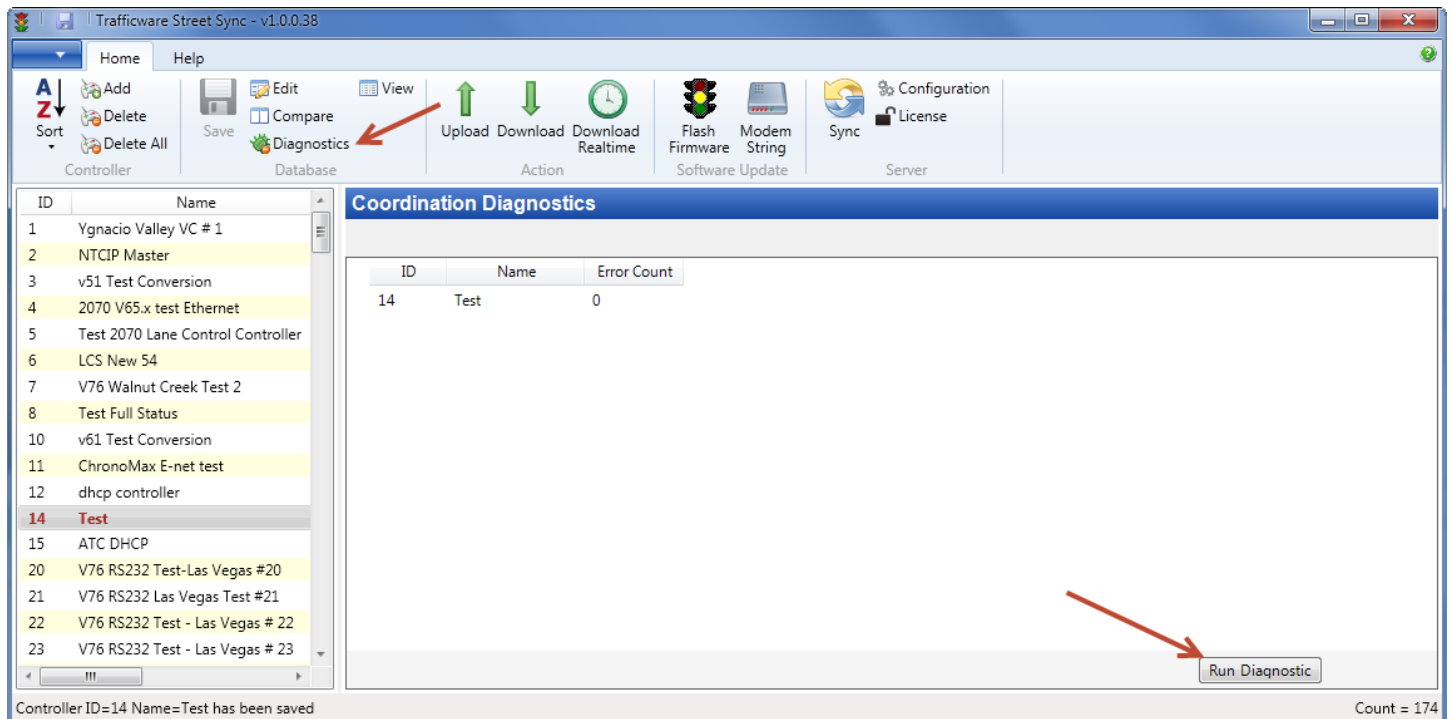
Parameter	ID 14 PRM	ID 14 UPL
1. Walk	0	0
1. Ped Clearance	0	0
1. Min Green	0	5
1. Passage	0	1
1. Max1	0	25
1. Max2	0	50
1. Yellow	0	3.5
1. Red	0	3.5
1. Red Revert	0	0
1. Added Initial	0	0
1. Max Initial	0	0
1. Time Before Reduce	0	0
1. Cars Before Reduce	0	0
1. Time To Reduce	0	0
1. Reduce By	0	0
1. Min Gap	0	0
1. Dynamic Max Limit	0	0
1. Dynamic Max Step	0	0
1. Startup	NONE	RED
1. Enable	OFF	ON
1. Auto Entry	OFF	OFF
1. Auto Exit	OFF	OFF
1. Non Act1	OFF	OFF
1. Non Act2	OFF	OFF

Differences are easily located and identified between the StreetSync database (PRM) and the uploaded database from the controller (UPL). Database differences are shown by color coding each database category tab and corresponding database parameter in **RED**. This will occur when a difference is present between the database types.

The user can make note of these differences and edit the database if needed.

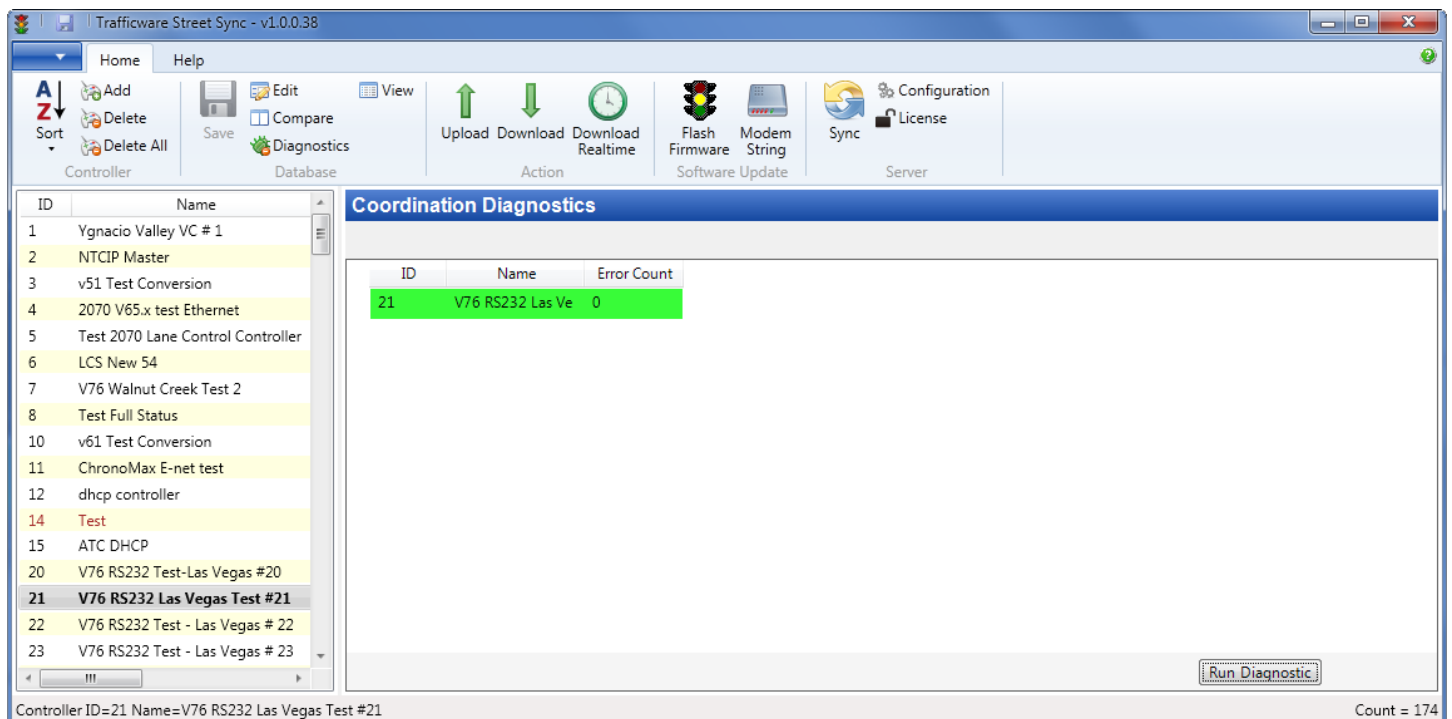
Diagnostics

The Coordination Diagnostics feature enables the user to run coordination database checks prior to download or by uploading an active database to run a diagnostics from ATMS. Users can run diagnostics on databases from StreetSync. Once this is selected, the following screen will be shown.



Select Run Diagnostics to run coordination diagnostics.

If the database passes the diagnostics check, the controller line will be highlighted GREEN as shown below



If a database does not pass the diagnostics, it will highlighted in RED and each individual error will be described. In the picture below, the database has been found with an error.

Home

Help

Sort

Controller

Add

Delete

Delete All

Save

Compare

Diagnostics

View

Database

Upload

Download

Download Realtime

Flash Firmware

Modem String

Software Update

Sync

Configuration

License

Server

ID	Name
1	Ygnacio Valley VC # 1
2	NTCIP Master
3	v51 Test Conversion
4	2070 V65.x test Ethernet
5	Test 2070 Lane Control Controller
6	LCS New 54
7	V76 Walnut Creek Test 2
8	Test Full Status
10	v61 Test Conversion
11	ChronoMax E-net test
12	dhcp controller
14	Test
15	ATC DHCP
20	V76 RS232 Test-Las Vegas #20
21	V76 RS232 Las Vegas Test #21
22	V76 RS232 Test - Las Vegas # 22
23	V76 RS232 Test - Las Vegas # 23

Coordination Diagnostics

ID	Name	Error Count
14	Test	2

Warning: Limited Diagnostics are run for controllers in USER MODE

Error : Phase Split Validation - Force Mode

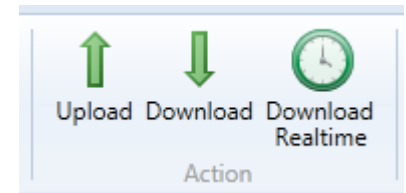
Run Diagnostic

Controller ID=14 Name=Test has been saved

Count = 174

Action Section

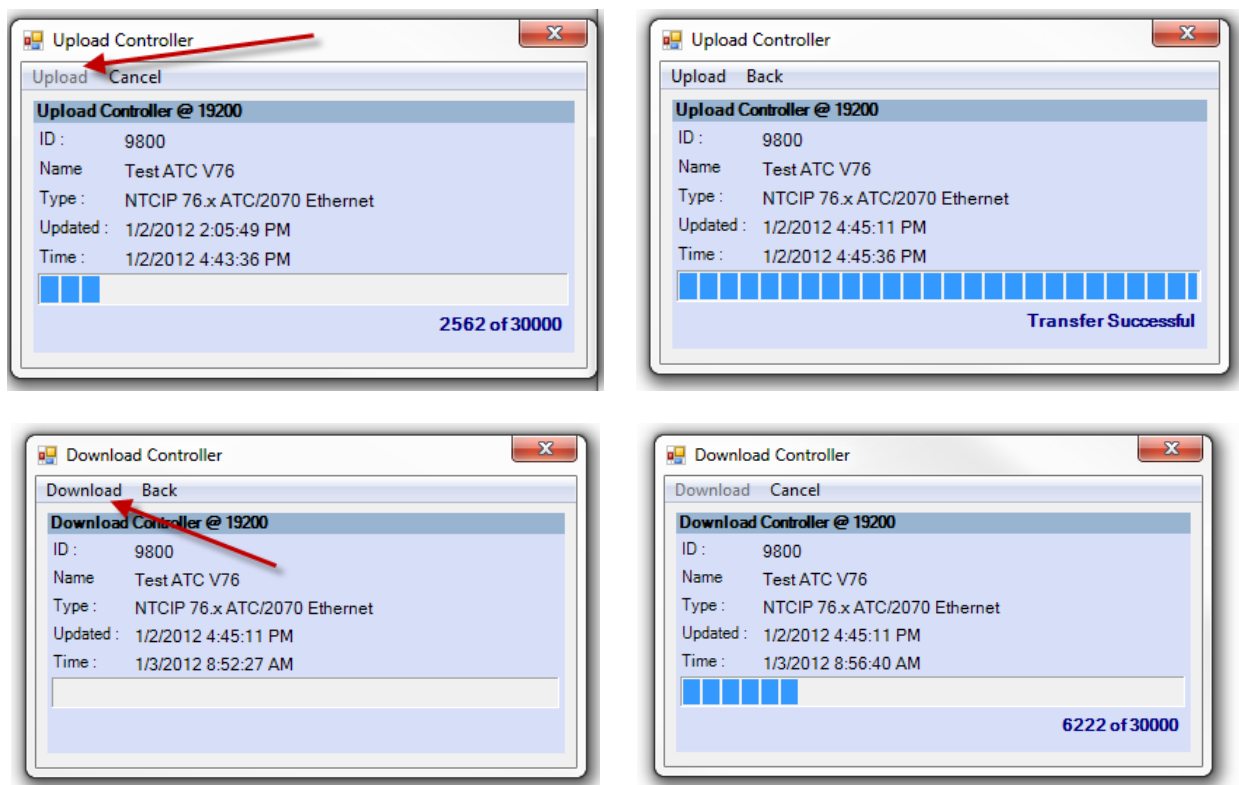
The Action menu will appear in the lower-left portion of the display. Sync operation is considered a “static” action, meaning that it is enabled whether or not a controller is selected. The other actions are “instance” actions, meaning that they are only enabled when a controller is selected.



Upload / Download

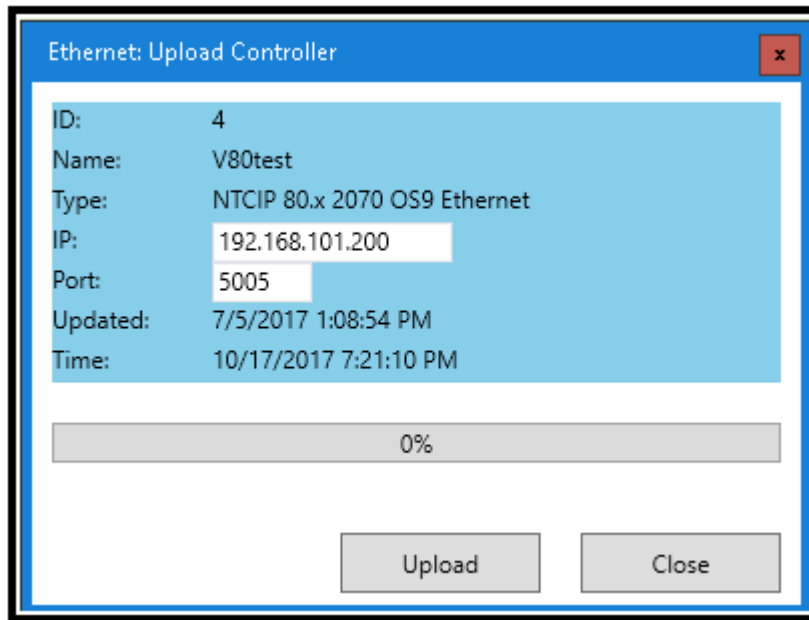
The Upload / Download screen works the same way as the existing ATMS Partner screen. The user selects a controller from the list, and then chooses the **Upload** or **Download** menu item. The app then displays the screen depicted below, indicating the selected controller. The user may then click either the **Upload** or **Download** menu item to transfer data between the device and the controller.

A screen will appear to allow the user to begin the Upload or Download. Select the action from the menu bar and the upload/download process will occur. A progress bar indicating how much of the laptop data has been transferred from (upload) or to (download) the controller. The user may cancel the operation at any time. When the Synchronization is complete, the progress bar displays **Transfer Successful**.



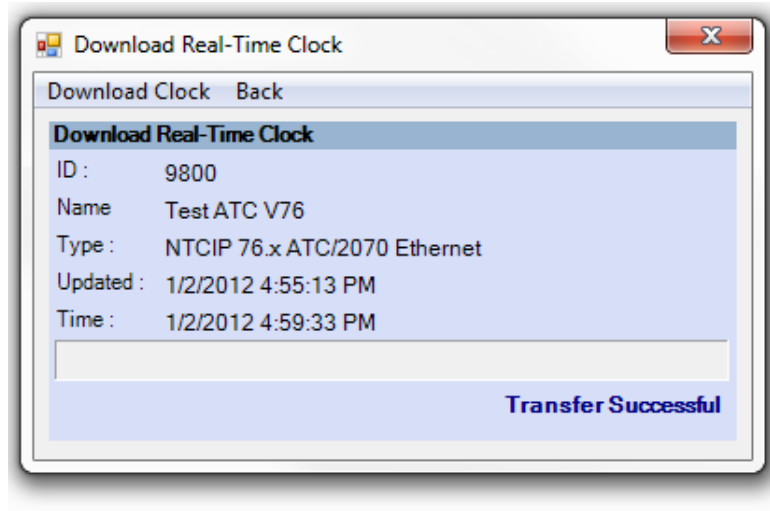
Please note that both Upload and Download overwrite the .PRM file in the StreetSync Database.

When uploading Scout [V85.x] controllers via Ethernet, The following screen will be display



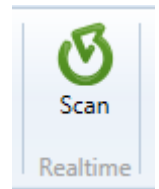
Download Real-Time

The Download Real Time screen works the same way as the existing ATMS Partner screen. The user selects a controller from the list, then chooses **Download Real Time** menu item. The app then displays the screen depicted below, indicating the selected controller. The user may then click the **Download Clock** button to transfer time data between the device and the controller. When the Synchronization is complete, the progress bar displays **Transfer Successful**.



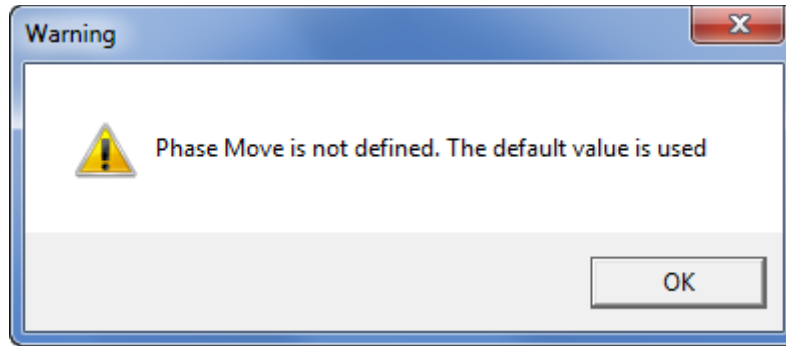
Realtime Section

The Real time section allows the user to scan a connected controller to view Red/Yellow/Green status



Scan

After selecting the intersection and connecting it to StreetSync the user can run a scan screen. The scan screen layout is dependent upon the ATMS setting known as *Edit Turn Phase/Directions*. If this is programmed in ATMS for the intersection that you are connected to the scan screen will be laid out as per this program. If *Edit Turn Phase/Directions* is not set then the following message will appear and a default screen is displayed.



After hitting OK a scan background will occur like the default on below.

	1	2	3	4	5	6	7	8	9	10	11	12	13	14	15	16
Phase	Red	Green	Red	Red	Red	Green	Red	Red	Grey	Grey	Grey	Grey	Grey	Grey	Grey	Grey
Overlap	Grey	Grey	Grey	Grey	Grey	Grey	Grey	Grey	Grey	Grey	Grey	Grey	Grey	Grey	Grey	Grey
Call	<input checked="" type="checkbox"/>	<input checked="" type="checkbox"/>	<input type="checkbox"/>	<input type="checkbox"/>	<input type="checkbox"/>	<input type="checkbox"/>	<input type="checkbox"/>	<input checked="" type="checkbox"/>	<input type="checkbox"/>	<input type="checkbox"/>	<input type="checkbox"/>	<input type="checkbox"/>	<input type="checkbox"/>	<input type="checkbox"/>	<input type="checkbox"/>	<input type="checkbox"/>
Ped	Red	Red	Red	Red	Red	Red	Red	Red	Grey	Grey	Grey	Grey	Grey	Grey	Grey	Grey
Ped Call	<input type="checkbox"/>	<input type="checkbox"/>	<input type="checkbox"/>	<input type="checkbox"/>	<input type="checkbox"/>	<input type="checkbox"/>	<input type="checkbox"/>	<input type="checkbox"/>	<input type="checkbox"/>	<input type="checkbox"/>	<input type="checkbox"/>	<input type="checkbox"/>	<input type="checkbox"/>	<input type="checkbox"/>	<input type="checkbox"/>	<input type="checkbox"/>

	17	18	19	20	21	22	23	24	25	26	27	28	29	30	31	32
Phase	Grey	Grey	Grey	Grey	Grey	Grey	Grey	Grey	Grey	Grey	Grey	Grey	Grey	Grey	Grey	Grey
Overlap	Grey	Grey	Grey	Grey	Grey	Grey	Grey	Grey	Grey	Grey	Grey	Grey	Grey	Grey	Grey	Grey
Call	<input type="checkbox"/>	<input type="checkbox"/>	<input type="checkbox"/>	<input type="checkbox"/>	<input type="checkbox"/>	<input type="checkbox"/>	<input type="checkbox"/>	<input type="checkbox"/>	<input type="checkbox"/>	<input type="checkbox"/>	<input type="checkbox"/>	<input type="checkbox"/>	<input type="checkbox"/>	<input type="checkbox"/>	<input type="checkbox"/>	<input type="checkbox"/>
Ped	Grey	Grey	Grey	Grey	Grey	Grey	Grey	Grey	Grey	Grey	Grey	Grey	Grey	Grey	Grey	Grey
Ped Call	<input type="checkbox"/>	<input type="checkbox"/>	<input type="checkbox"/>	<input type="checkbox"/>	<input type="checkbox"/>	<input type="checkbox"/>	<input type="checkbox"/>	<input type="checkbox"/>	<input type="checkbox"/>	<input type="checkbox"/>	<input type="checkbox"/>	<input type="checkbox"/>	<input type="checkbox"/>	<input type="checkbox"/>	<input type="checkbox"/>	<input type="checkbox"/>

Channel	1	2	3	4	5	6	7	8	9	10	11	12	13	14	15	16
Red	Red	Red	Red	Red	Red	Red	Red	Red	Red	Red	Red	Red	Red	Red	Red	Red
Yellow	Grey	Grey	Grey	Grey	Grey	Grey	Grey	Grey	Grey	Grey	Grey	Grey	Grey	Grey	Grey	Grey
Green	Green	Green	Green	Green	Green	Green	Green	Green	Green	Green	Green	Green	Green	Green	Green	Green

Channel	17	18	19	20	21	22	23	24	25	26	27	28	29	30	31	32
Red	Red	Red	Red	Red	Red	Red	Red	Red	Red	Red	Red	Red	Red	Red	Red	Red
Yellow	Grey	Grey	Grey	Grey	Grey	Grey	Grey	Grey	Grey	Grey	Grey	Grey	Grey	Grey	Grey	Grey
Green	Grey	Grey	Grey	Grey	Grey	Grey	Grey	Grey	Grey	Grey	Grey	Grey	Grey	Grey	Grey	Grey

Ring	Min	Max	Ped
1	7	23	
2		5	
3			
4			
5			
6			
7			
8			

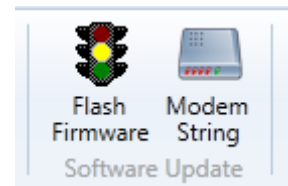
Pattern:	1	Cycle:	90	Ph Opt:	0
TBC:	12	Offset:	49	Ph Time:	0
Local:	52	Splits:	1	DetGrp:	0

10/26/2017 1:16:42 PM

The scan screen will display Phase Red/Yellow/Green status, timing, Channel Outputs and coordination data so that the user can check the intersection from his PC while verifying field data.

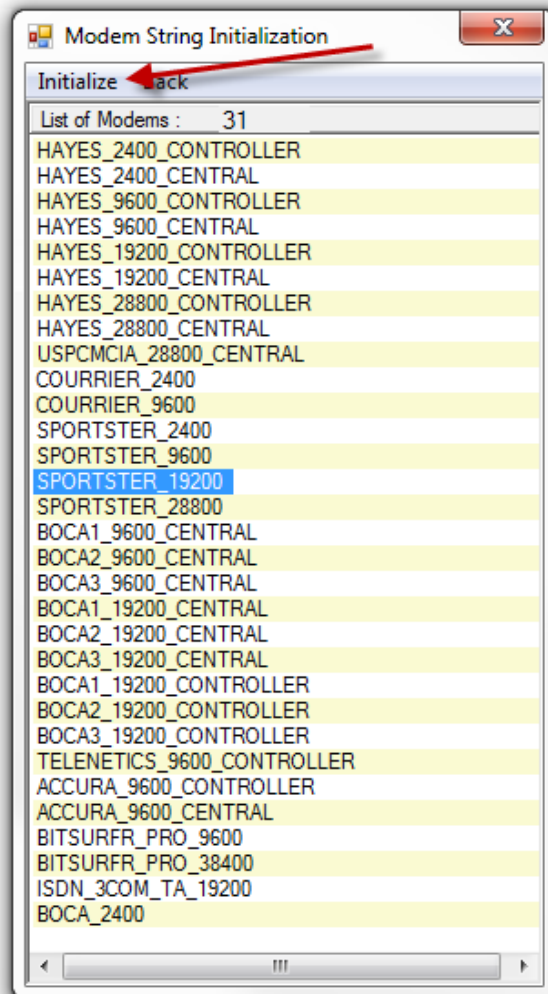
Software Update Section

The software Update sections allows the user to Flash firmware to a 980 NEMA controller or a Cubic | Trafficware MMU as well as interface to dial modems to set up communication strings.



Modem String Initialization

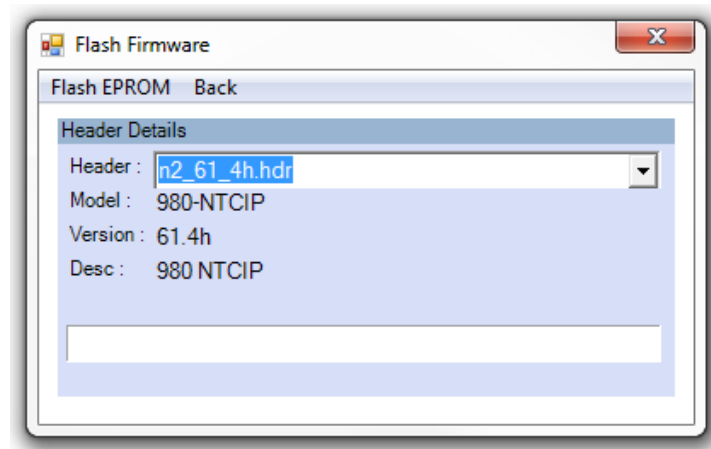
The user can connect the laptop to a modem to initialize it with setup data if needed. Select the **Modem String** Action and chose the modem type that you plan to initialize.



By selecting **Initialize** and connecting the laptop to your modem, StreetSync will download a setup string to the modem.

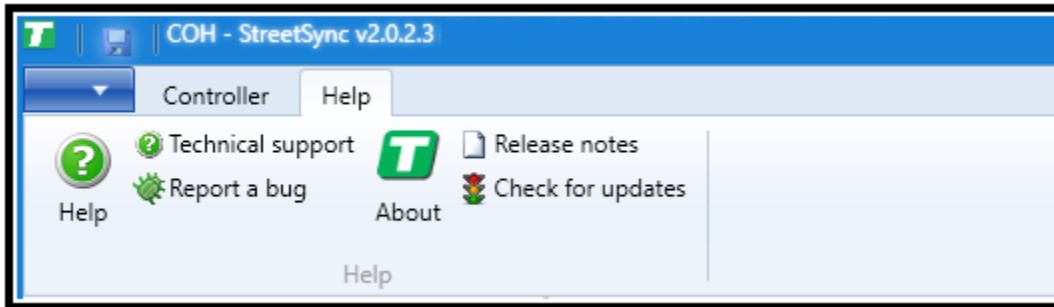
Flash Firmware

For Cubic | Trafficware TS2 controllers and Cubic | Trafficware MMU's firmware can be upgraded and installed via ATMS.partner. Selecting **Flash Firmware** will bring up the following screen as shown below.



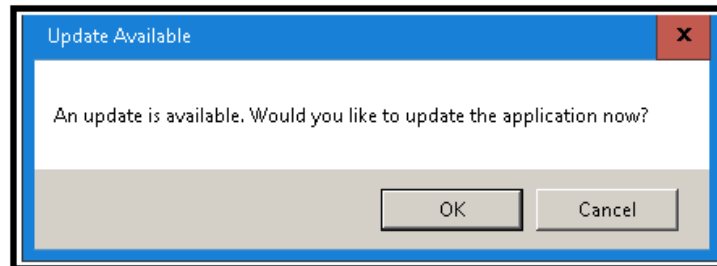
Click on the pull down menu to select the firmware header file. A list will appear, with the available Proms to download. Select the desired EPROM. Finally, Select **FlashEPROM** from the menu to begin the download. The header files must be located on the ATMS server under the directory: **...Naztec/Nazserv/Downprom.**

Help Section

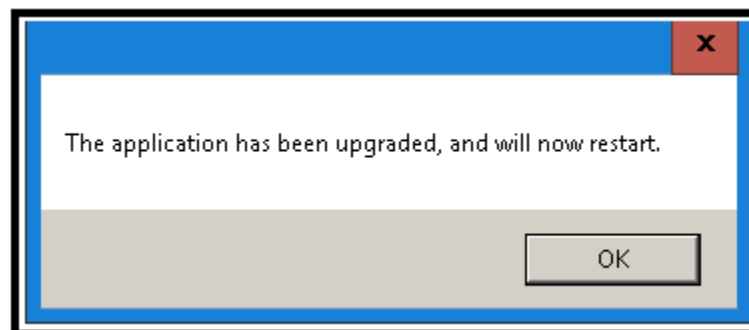


Among the features of the StreetSync **Help** section is access to this manual, release notes and an automatic update check feature.

Note: If a StreetSync update is available via the internet and you run it, it may take a few minutes to access and install the update files. You will get the following if an Update is available:



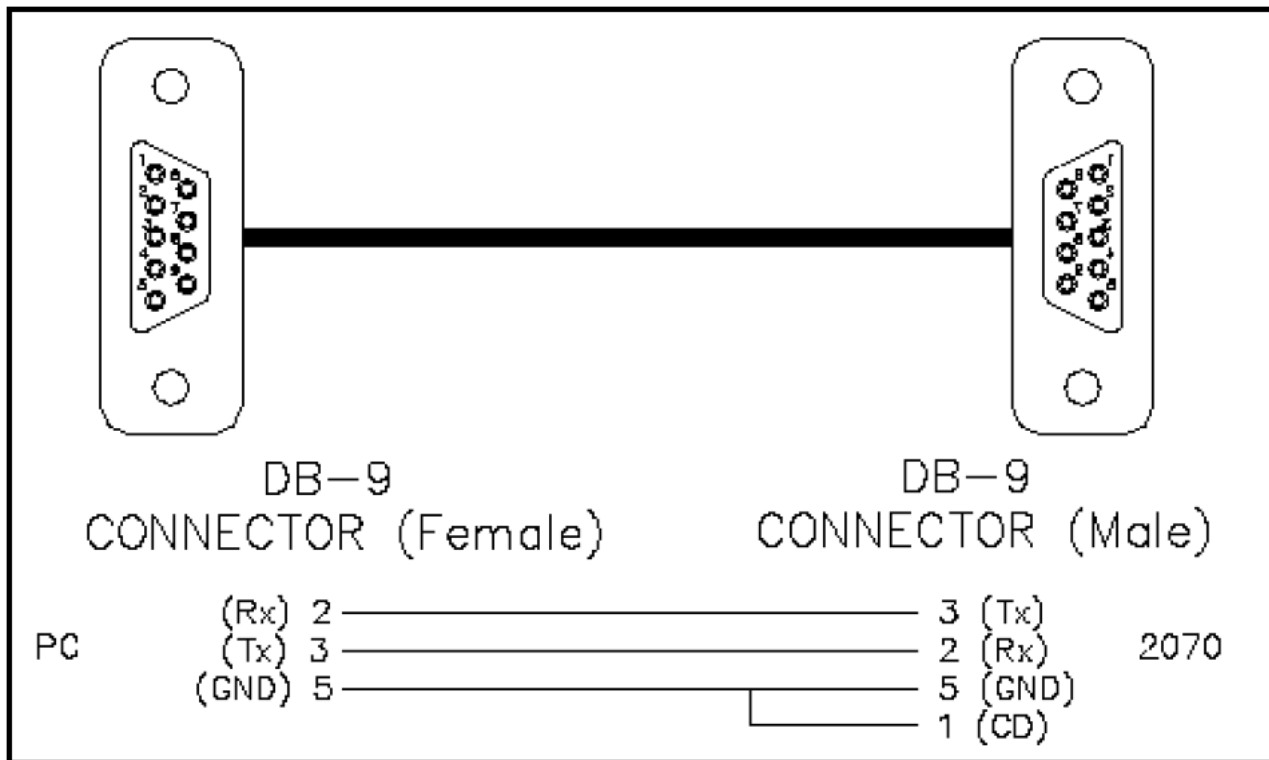
During the update process, StreetSync will not display any confirmation screen. Please wait until you see the following confirmation screen be displayed that insures that StreetSync was updated:



Hardware considerations

PC to 2070 Cable Setup

The following is a diagram outlining the pin-outs for a cable connecting the 2070 C50 connector to the comm. port of your PC or laptop.



NEMA TS2 Communications Port Cable setup

System (P-A)				System Up (P-A)				System Down (P-B)			
Pin	Function	Pin	Function	Pin	Function	Pin	Function	Pin	Function	Pin	Function
1	Earth Ground	7	Signal Ground	1	Earth Ground	7	Signal Ground	1	Earth Ground	5	CTS
2	TX	8	DCD	2	TX	8	DCD	2	TX	7	Signal Ground
3	RX	20	DTR	3	RX	20	DTR	3	RX	8	DCD
4	RTS	24	Enable	4	RTS	24	Enable	4	RTS	20	DTR
5	CTS	25	Logic Ground	5	CTS	25	Logic Ground				

NOTE: Additional Hardware setup information can be found in TecNote 3033 as published on Trafficware's Freshdesk Documentation Site. Contact your Trafficware representative for further information.