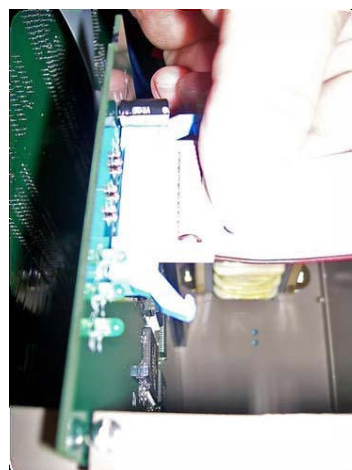


 [Click here to print a copy of this document in PDF format.](#)

# TecNote 1010 - Installing Network Software on a TS2 Ethernet Board

The purpose of this TecNote is to help the user install a network software on a Naztec Ethernet card used in a TS2 Controller. This example will install version **n35d** over **n34** in the Ethernet card.



## Turn Off the IP network software on the controller

- 1) You must first turn off IP in the controller by navigating to the MM->6->5.

```

IP          Device          Host
Addr  192.168.104.157 1-192.168.104.109
Mask  255.255.255.  0 2-  0.  0.  0.  0
                                Port #: 5009
GtWay  192.168.104.254    IP Enable: ON
Reset Time:  5           Status: OK
  
```

- 2) Disable IP by turning IP Enable to OFF.

**VERY IMPORTANT   VERY IMPORTANT   VERY IMPORTANT   VERY IMPORTANT**

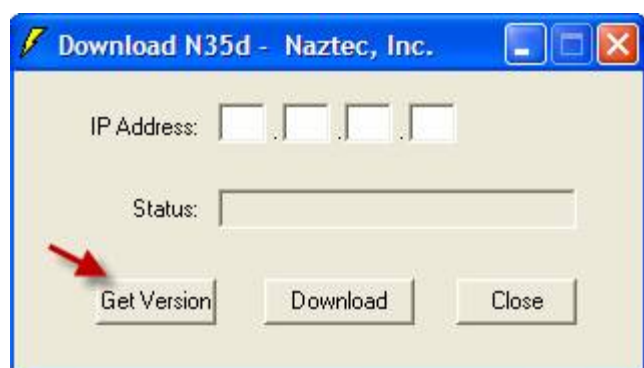
*If you do not do this step and try to download the new software in the card, you will damage the card and have to send it back to the factory for Repair!*

**VERY IMPORTANT   VERY IMPORTANT   VERY IMPORTANT   VERY IMPORTANT**

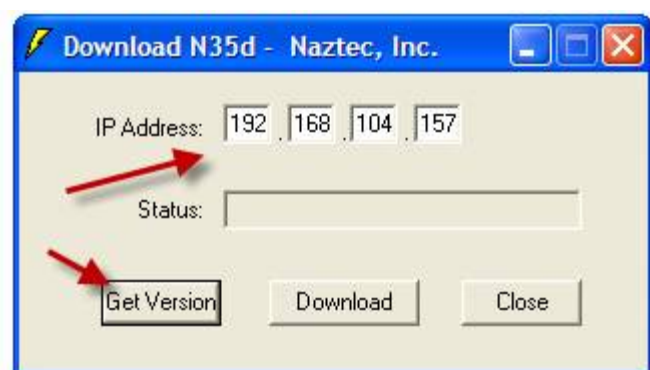
IP	Device	Host
Addr	192.168.104.157	1-192.168.104.109
Mask	255.255.255. 0	2- 0. 0. 0. 0
		Port #: 5009
GtWay	192.168.104.254	IP Enable: OFF
Reset Time:	5	Status: OFF

## Installing the Network Software in the Ethernet Card

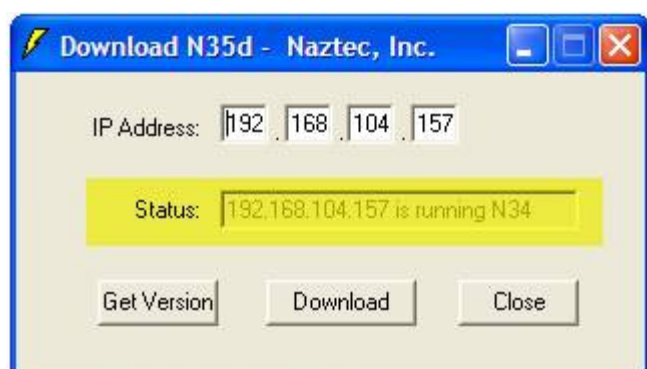
- 1) Plug in your Ethernet cable that is connected to the PC into the front of the unit.
- 2) Note the IP address of the unit that is programmed. In this example, the IP address is 192.168.104.157.
- 3) Start the **n35d** software on the PC. You should see the following screen come up.



- 4) We want to verify communications and the version number of the software on the network card. Type in the IP address that matches the unit and hit the "**Get Version**" button.



- 5) If the unit is communicating, you should see the version number as highlighted below.



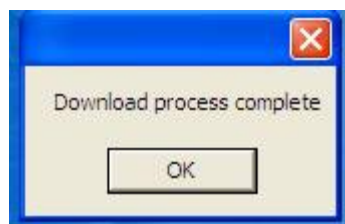
6) If the version on the Card doesn't match or is an earlier release than your version, Hit the **"Download"** key to begin the download. Downloads should take between one to two minutes.

**VERY IMPORTANT VERY IMPORTANT VERY IMPORTANT VERY IMPORTANT**

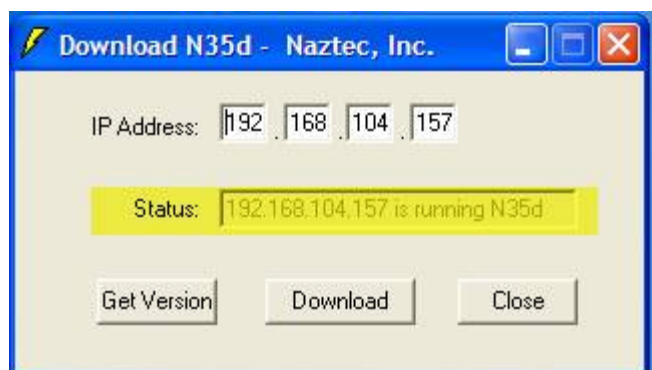
*After the update is complete, you must wait at least 2 minutes before selecting "OK" on the screen shown in step 7 below. If you do not wait, you will damage the card and have to send it back to the factory for Repair!*

**VERY IMPORTANT VERY IMPORTANT VERY IMPORTANT VERY IMPORTANT**

7) When the download is complete, you should see the following screen. After waiting at least 2 minutes, you can hit the "OK" button.

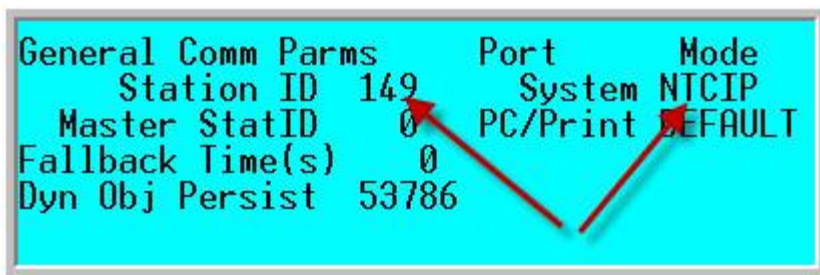


7) We want to verify communications and the version number of the software on the network card. Type in the IP address that matches the unit and hit the **"Get Version"** button. The version should now match the updated version number (in this example version **n35d**).

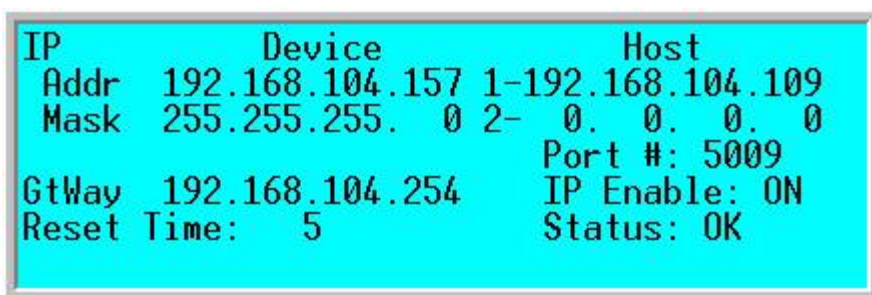


## Setting up your TS2 controller for static IP networks

1) Go to MM->6->1 General Comm Parameters screen and program your Station ID and System Mode to match the controller ID number and type in ATMS.now.



2) Go to MM->6->5 and program the IP parameters screen with the appropriate IP address of the controller, IP address of the host (i.e.server), the mask, the Gateway IP address (if needed) and the IP Port number which will match the Drop number in ATMS.now.

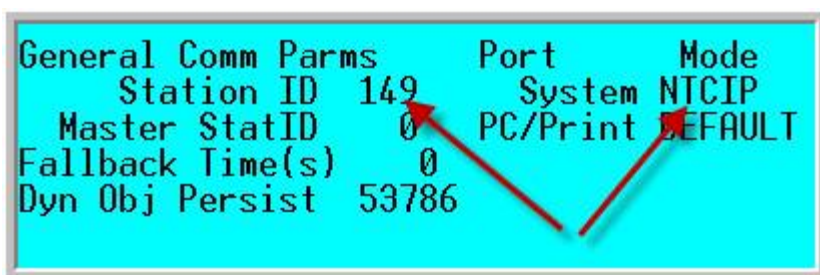


3) Once you program the above, disable IP by Turning IP Enable to "OFF" and re-enable IP by turning IP enable to "ON", for the changes to take place.

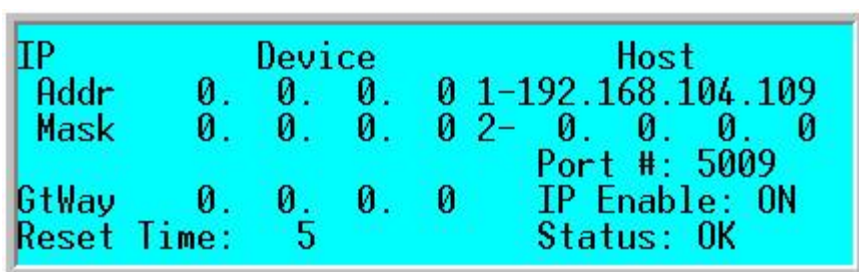
## Setting up your TS2 controller for DHCP IP networks

1) To use DHCP, your ethernet board must have network software installed on it that supports DHCP (n35d or greater).

2) Go to MM->6->1 General Comm Parameters screen and program your Station ID and System Mode to match the controller ID number and type in ATMS.now.



3) Go to MM->6->5 and program the IP parameters screen with an IP address of 0.0.0.0, an IP address of the host (i.e.server), a mask of 0.0.0.0, a Gateway IP address of 0.0.0.0 and the IP Port number which will match the Drop number in ATMS.now.



4) Once you program the above, disable IP by Turning IP Enable to "OFF" and re-enable IP by turning IP enable to "ON", for the changes to take place. At this point DHCP will retrieve the IP address from the DHCP server for you.

## Summary

---

By following the steps above, you can update your network card...however, care should be taken when updating internal TS2 network cards.

---

If you are running Microsoft Internet Explorer, you can [click here](#) to download this page here.

Otherwise, print a copy of the document using the PDF file at the beginning of this page