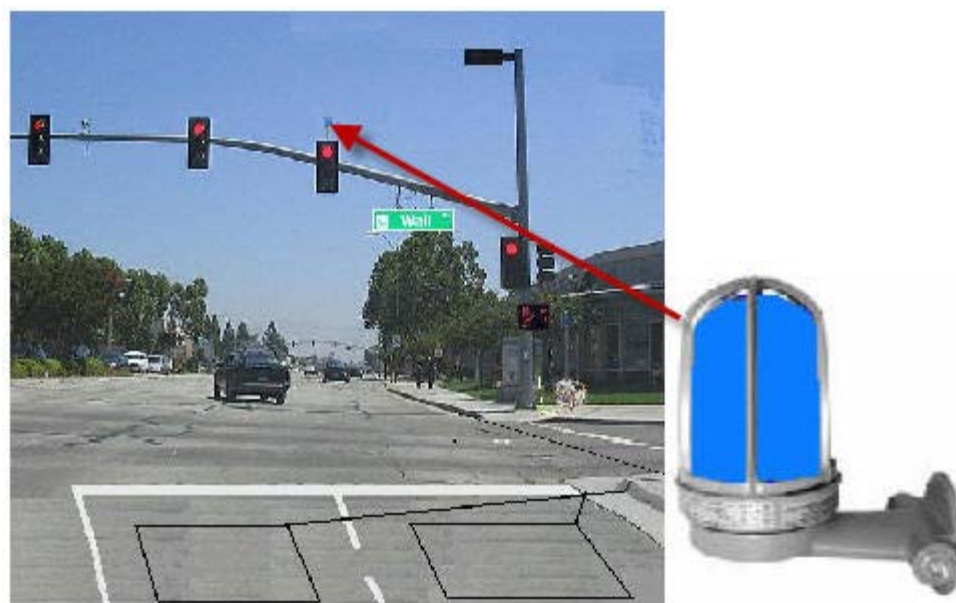


 [Click here to print a copy of this document in PDF format.](#)

# TecNote 1107 - Setting up Confirmation Lights for Emergency Vehicle Preemptions on a 980 controller

Agencies may choose to use confirmation lights in an intersection to give an acknowledgment to an emergency vehicle operator that the preemption request from his vehicle is currently operating. This tecnote explains the procedure to set this up using a TS2 version 61.x controller.



**\*\*NOTE: This works on version 61.3n and newer and cannot be used with the Flashing Yellow Arrow\*\***

## Version 61.x Programming

---

1. Go to MM->1->3->3,
2. Page down to the bottom of the screen and set the EVP Ped Confirm to "ON-FLASH". This will cause the dwell phase confirmation light to be solid and the others to flash.
3. Program the preemption settings for the desired operation as you would normally do.

## Operational Discussion

---

The confirmation light outputs are displayed utilizing the yellows outputs on channels 13-16.

The confirmation light outputs and channels are directly correlated to the programming set in MM->1->3->1-Right Menu, see below. Please note that the normal defaults for Channels 13-16 are as shown below and are set for Pedestrian 2, 4, 6, and 8.

I	Chan.	9	10	11	12	13	14	15	16
P/Olp#	1	2	3	4	2	4	6	8	
Type	OLP	OLP	OLP	OLP	PED	PED	PED	PED	
Flash	RED	RED	RED	RED	DRK	DRK	DRK	DRK	
Alt Hz	.	.	.	.	.	.	.	.	
Dim Grn	.	.	.	.	.	.	.	.	
Dim Yel	.	.	.	.	.	.	.	.	
Dim Red	.	.	.	.	.	.	.	.	
Dim Cyc	+	+	+	+	+	+	+	+	
FlshGrn	0.0	0.0	0.0	0.0	0.0	0.0	0.0	0.0	

## Programming examples

- 1. If you set Pre1 to dwell in phases 2 & 5 then the channel 13 yellow will be solid and the others will flash.
- 2. If you set Pre2 to dwell in phases 1 & 6 then the Channel 15 yellow will be solid and the others will flash.
- 3. If you set Pre3 to dwell in phases 3 & 8 then the Channel 16 yellow will be solid and the others will flash.
- 4. If you set Pre4 to dwell in phases 4 & 7 then the Channel 14 yellow will be solid and the others will flash.
- 5. If you have a sequence where you use phase 3 for one side street and phase 4 for the other, change the output mapping in MM->1->3->1-Right Menu as seen below:

<	Chan.	9	10	11	12	13	14	15	16
P/Olp#	1	2	3	4	2	3	6	4	
Type	OLP	OLP	OLP	OLP	PED	PED	PED	PED	
Flash	RED	RED	RED	RED	DRK	DRK	DRK	DRK	

- If Pre1 dwell phases are 2 & 5 then Ch. 13 Yellow will be solid and others will flash.
- If Pre2 dwell phases are 1 & 6 then Ch. 15 Yellow will be solid and others will flash.
- If Pre3 dwell phase is 3 then Ch. 14 Yellow will be solid and others will flash.
- If Pre4 dwell phase is 4 then Ch. 16 Yellow will be solid and others will flash.

**\*\*The preemption number does not matter, it is the dwell phase and the PED phase output mapping that control the confirmation light outputs.**

**Conflict monitor programming provisions must be made and a dummy load resistor should be used on the Channel 13-16 Green indications.**

## Summary

---

Make sure that you are using version 61.3n or greater if your agency is utilizing multiple emergency vehicle confirmation lights.

---

If you are running Microsoft Internet Explorer, you can [view](#) this page here.

Otherwise, print a copy of the document using the PDF file at the beginning of this page