

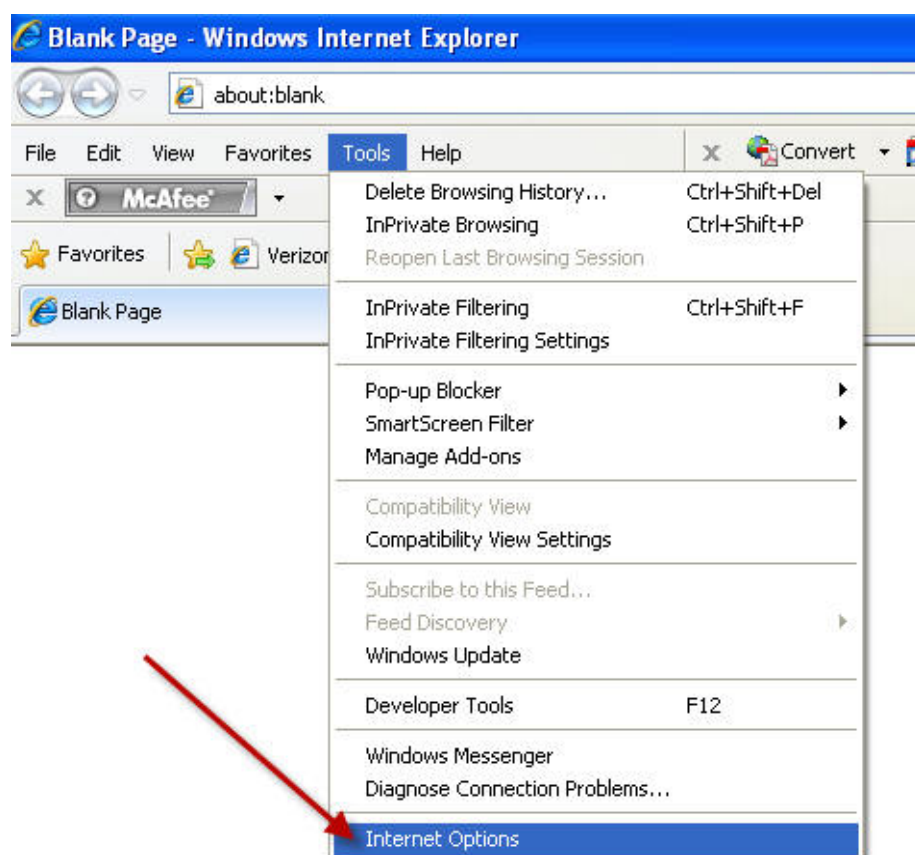
TecNote 3102 - Interfacing ATMS.now with Internet Explorer 8

The purpose of this TecNote is to show the user how to configure Internet Explorer 8 (IE8) to properly interface with the ATMS.now Central software. Users should also follow the steps in this TecNote after updating their browser to IE8.

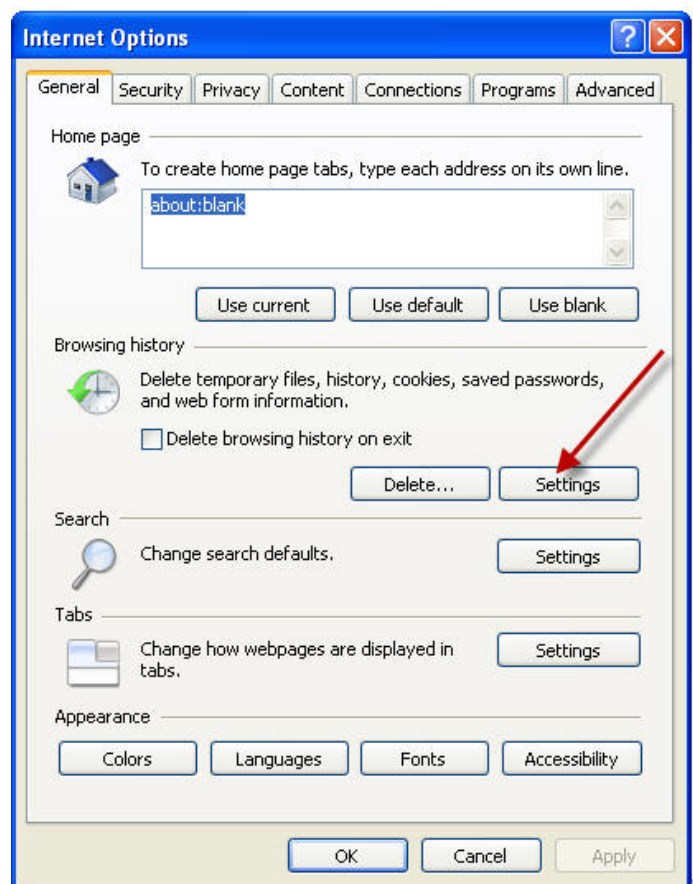
IE8 setup steps

The following steps should be taken when updating to Internet Explorer 8 of if you are having problems with ATMS.now interfacing to Internet Explorer 8.

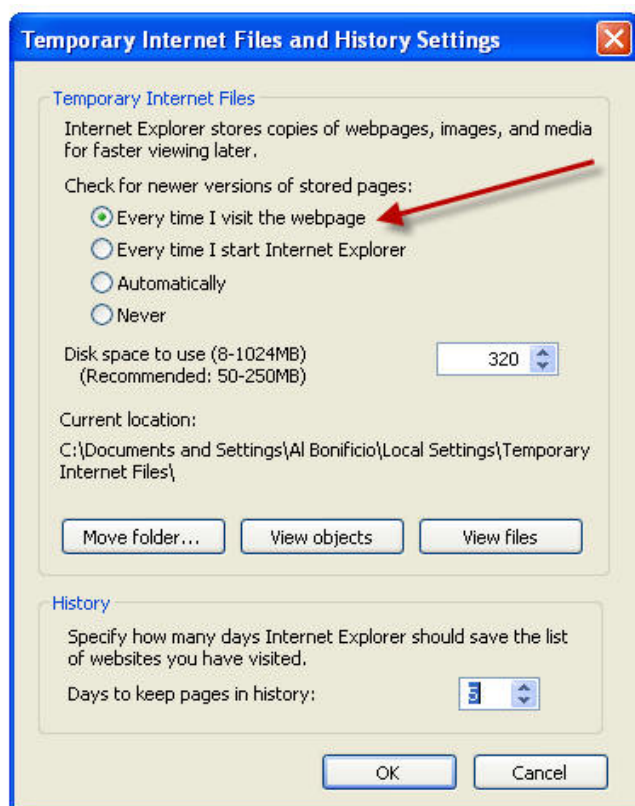
1. Close ATMS client.
2. Open Internet Explorer 8.
3. From the file menu select Tools->Internet Options



4. Under the General Tab - Browsing History click on the "Settings" button



5. Under "Check for newer versions of stored pages: " select the first radio button, "Every time I visit the webpage".



6. Restart the ATMS Client and it will now interface with IE8.

Summary

This TecNote discusses the steps necessary to configure Internet Explorer 8 (IE8) to properly interface with the ATMS.now Central software.

If you are running Microsoft Internet Explorer, you can [view](#) this page here.

Otherwise, print a copy of the document using the PDF file at the beginning of this page