

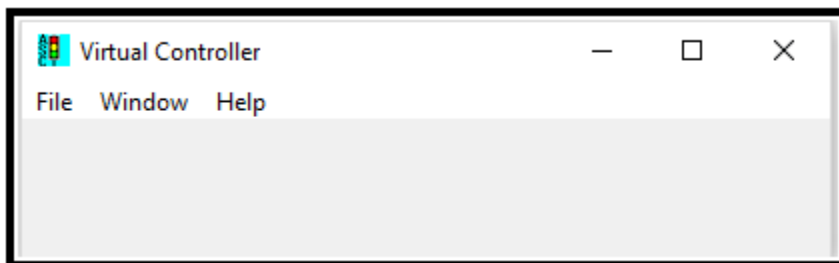
Virtual Controller

The Virtual Controller is a tool that is used to simulate and test databases.

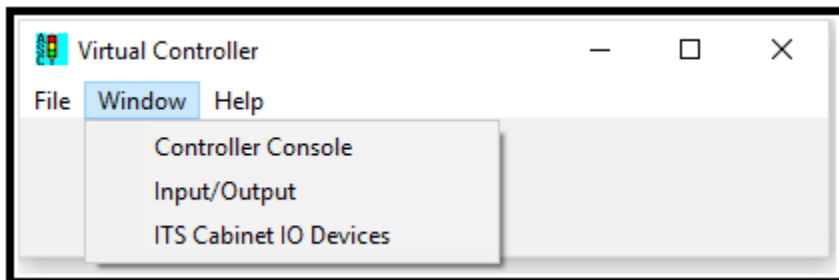
The agency needs to get a license from Trafficware. Once Licensed, The sections below will explain how to put in a STD 8 phase database and get the IO working for testing.

General Initialization

When you run the VC you will see the following:

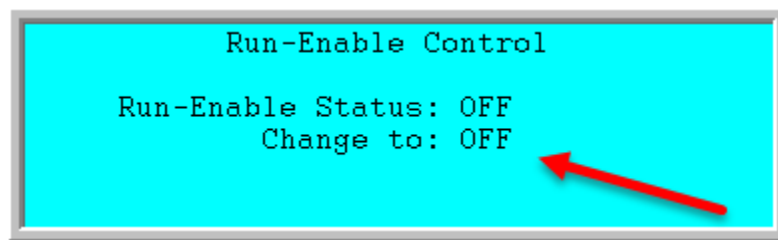


Select the window menu and open both the Control Console as well as Input/Output windows

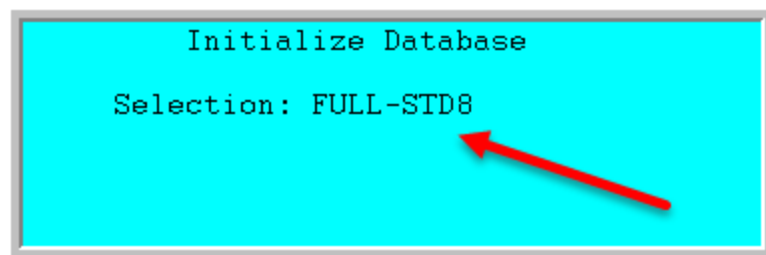


Initialize the VC as shown below:

MM->1->7: Turn off the run Timer



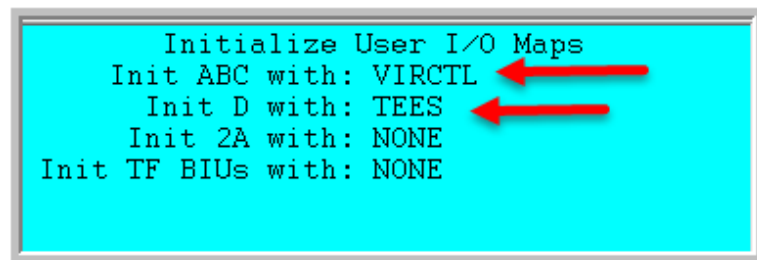
MM->8->4->1: Initialize as Full STD8



V76 I/O

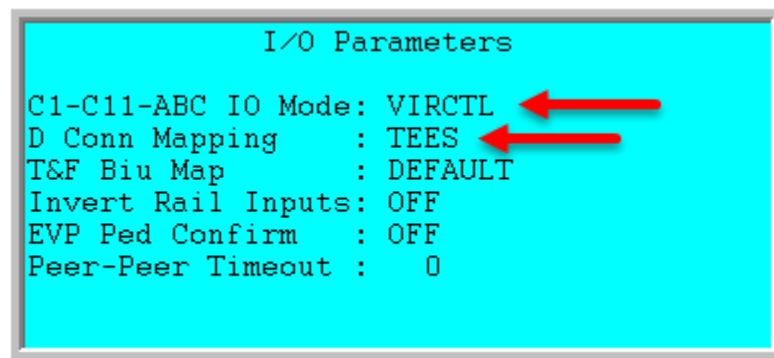
To get the IO working for V76 select the following menus

MM-1-9-4-3: This will initialize the IO data in the controller



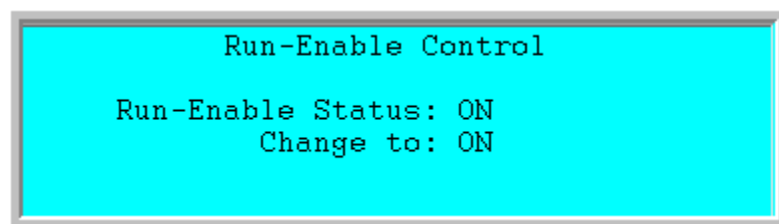
The default of *Init ABC with:* is VIRCTL so please toggle thru the list until VIRCTL is selected again.

MM-1-9-1: This will select the IO when the controller is started.



The default of *C1-C-11-ABC IO Mode:* is VIRCTL so please toggle thru the list until VIRCTL is selected again.

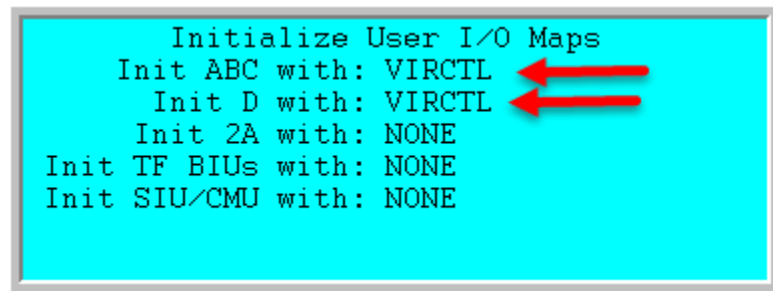
MM-1-7: Turn on the Run timer



V80/V85 Scout I/O

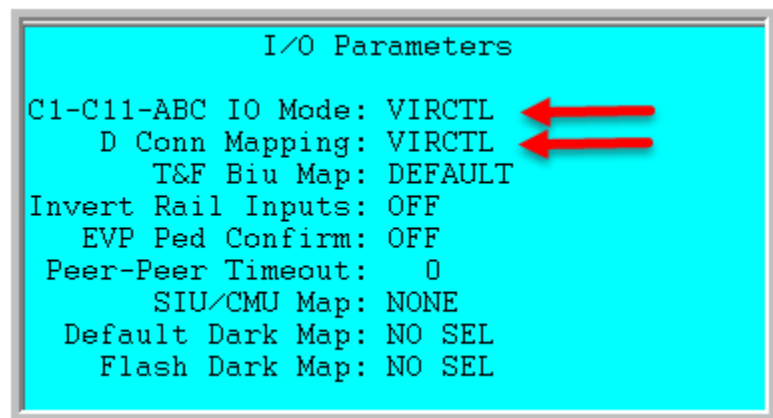
To get the IO working for V80/V85 Scout select the following menus

MM-1-9-4-3: This will initialize the IO data in the controller



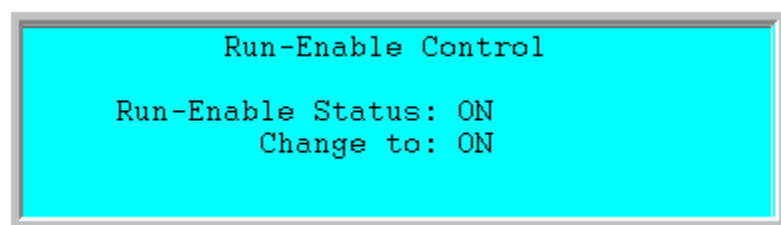
The default of *Init ABC with:* is VIRCTL so please toggle thru the list until VIRCTL Is selected again.

MM-1-9-1: This will select the IO when the controller is started.




The default of *C1-C-11-ABC IO Mode:* is VIRCTL so please toggle thru the list until VIRCTL Is selected again.

MM-1-7: Turn on the Run timer



MM-1-3-7: set Up ITS devices as shown below:

```
ITS Device: SIU Swpk/Inpt  CMU  FIO
Dev         : 1111  111  2
Addr  : 134567  90123  567  0
DevActive : .....  ....  ...  X
SIUCritical: XXXXXX  XXXXX  XXX
FIO Type   : 2070-8
CMU Type   : 212 (ITS)
CMU FS Amp : 10.0 A
Local Conflict Check: OFF
```



MM-1-7: Turn on the Run timer

```
Run-Enable Control

Run-Enable Status: ON
Change to: ON
```