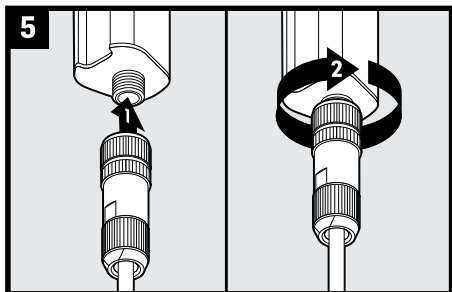
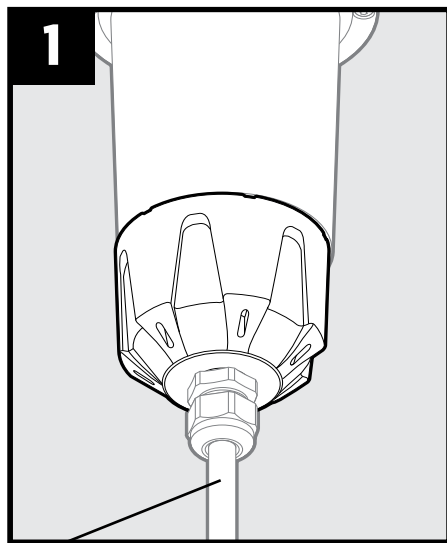
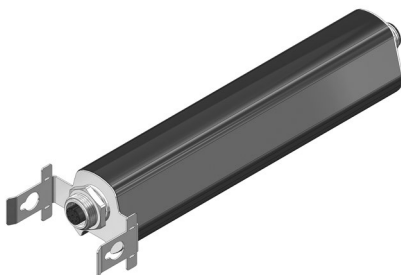


SMK REPLACEMENT INSTRUCTIONS



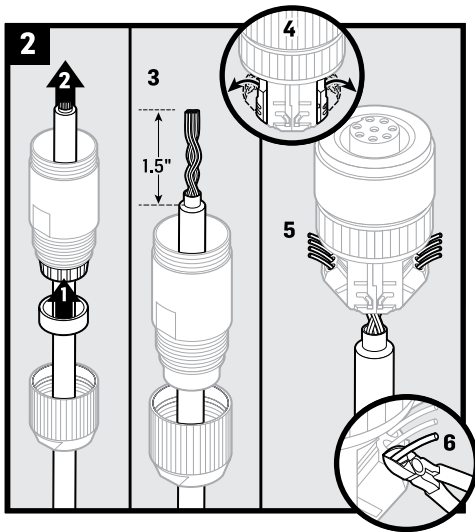
(1) Install M12 connector to bottom connection of junction box. (2) Hand tighten connection.



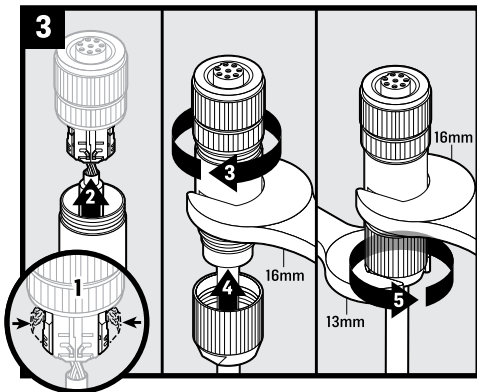
Cut off the CAT5e cable going into the old the Junction Box.

Cubic Transportation Systems, Inc.
10545 Hardin Valley Rd, Knoxville, TN 37932
Tel +1 866 652 5347
gridsmartinfo@cubic.com
transportation.cubic.com

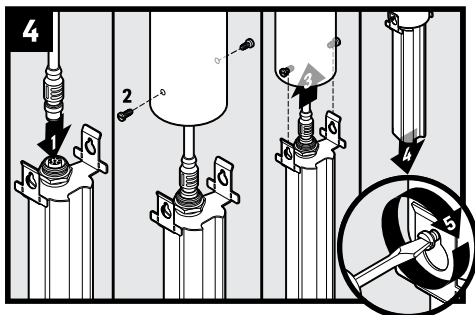
NOTE: DO NOT CUT CAT5E CABLE IF REPLACING A V2 JUNCTION BOX; UNSCREW THE TOP AND BOTTOM CONNECTORS!



(1) Install the rubber cable gland into the black plastic fingers on the sleeve. (2) Install cable through pressure nut and sleeve. (3) Strip 1.5" off of cable. (4) Open both terminal blocks on connector. (5) Using the color codes above each terminal block, guide the individual wires from the back through the inlet openings. (6) Cut off protruding wire until it is flush.



(1) Press terminal blocks IN to close and connect the wires. (2) Push the sleeve up to the front of the connector. (3) While holding the sleeve housing in place with a 16mm wrench, (4) screw on the connector until tight. (5) Continue holding the sleeve housing with a 16mm wrench and screw the pressure nut onto the sleeve housing using a 13mm wrench.



(1) Install Bell cable from pole assembly to junction box upper connection. (2) Install set screws. Align junction box tabs with set screws on outside of pole. (3) Slide tabs into upper pole assembly. (4) Pull down on junction box to lock tab key holes into set screws. (5) Tighten set screws with flathead screwdriver.